

**CATIA
Teamcenter
Interface
R11**

CMI R11 Release 2.2

User Manual

Copyright

© 1999, 2010 T-Systems International GmbH.
All rights reserved. Printed in Germany.

Contact

T-Systems International GmbH
Solution Center PLM
Fasanenweg 5
70771 Leinfelden-Echterdingen
Germany

<http://www.cmi-support.com>

☎ +49-711-972-40304

✉ +49-711-972-95975

mail : cmi_support@t-systems.com

Manual History

Version	Date
1.0	December 2008
1.1	February 2009
1.2	March 2009
2.0	July 2009
2.1	October 2009
2.2	April 2010

This edition obsoletes all previous editions.

Trademarks

CATIA is a registered trademark of Dassault Systèmes.

Teamcenter is a registered trademark of Siemens PLM Corporation.

Metaphase is a registered trademark of Metaphase Technology, Inc.

Names of other products mentioned in this manual are used only for identification purpose and may be trademarks of their companies.

Preface

This manual describes the main functionality delivered by the CATIA Teamcenter Interface (CMI RII) and includes the creation, storage, modification, and management of CATIA models and assembly structures in the Teamcenter PDM system.

About this Manual

This manual is intended for end users of the CATIA Teamcenter Interface. It assumes that the reader is familiar with the CATIA application and with Teamcenter Rich Client.

Related Documents

The following manuals contain information about installation, usage and customization of the CATIA Teamcenter Interface:

Manual Title	Version
<i>CATIA Teamcenter Interface RII Installation Manual</i>	2.2
<i>CATIA Teamcenter Interface RII User Manual</i>	2.2

Organization

This manual contains the following chapters:

Chapter 1 provides basic information about the CATIA Teamcenter Interface and describes some features of this application interface.

Chapter 2 describes how to start CATIA within the Teamcenter environment and also how to enable the CMI functionality within CATIA V5.

Chapter 3 introduces the *CMI RII Application* with a general explanation and then by listing its functions. The goal of this chapter is to make the user familiar with this component. The *CMI RII Application* functions will be explained in subsequent chapters.

Chapter 4 describes how to handle CATIA relevant data in Teamcenter.

Chapter 5 explains how to work with CATIA V5.

Glossary contains the CATIA Teamcenter Interface terminology.

Conventions Used in this Manual

This font Is used for document titles and emphasis.

Item 1→Item 2 Is used to identify a menu path to reach a specific function.



This icon is used to identify tips and attention advises.



This icon is used to identify Teamcenter related sections and actions.



This icon is used to identify CATIA V5 related sections and actions.

Your Comments are Welcome

Please feel free to tell us your opinion; we are always interested in improving our publications. Mail your comments to:

T-Systems International GmbH
Solution Center PLM
Fasanenweg 5
70771 Leinfelden-Echterdingen
Germany

E-mail: cmi_support@t-systems.com

Table of Contents

CHAPTER 1	1
OVERVIEW	1
INTRODUCING CMI (CATIA TEAMCENTER INTERFACE).....	1
CMI RII JOINS THE ADVANTAGES OF CAD WITH PDM.....	1
CMI ARCHITECTURE.....	2
CHAPTER 2	3
GETTING STARTED	3
ASSUMPTIONS.....	3
STARTING APPLICATIONS.....	3
ENABLING THE CMI TOOLBAR IN CATIA V5.....	3
CHAPTER 3	5
THE CMI RII APPLICATION	5
WHAT IS THE CMI RII APPLICATION?.....	5
THE CMI RII APPLICATION MENU.....	6
<i>Menu item File</i>	6
<i>Menu item Edit</i>	6
<i>Menu item Tools</i>	7
<i>Menu item Window</i>	8
<i>Menu item Help</i>	8
POP-UP MENUS OF CMI RII ITEMS.....	9
<i>Items in the CMI RII Application</i>	9
<i>Models in the CMI RII Application</i>	9
ENHANCEMENTS IN THE STRUCTURE MANAGER APPLICATION	11
CMI RII MENU BAR IN THE STRUCTURE MANAGER APPLICATION.....	11
<i>Menu item CMI – RII</i>	11
ENHANCEMENTS IN THE MY TEAMCENTER APPLICATION	13
CMI RII MENU BAR IN THE MY TEAMCENTER APPLICATION.....	13
<i>Menu item CMI – RII</i>	13
CHAPTER 4	15
CATIA RELEVANT OBJECTS IN TEAMCENTER	15
PREDEFINED OBJECT STRUCTURE.....	15
WORKING WITH STRUCTURES.....	16
<i>Creating an Item</i>	16
<i>Searching for Items</i>	16
<i>Creating a Structure</i>	16
<i>Example Structure for CMI</i>	17
UPDATING A STRUCTURE.....	21
HIGHLIGHTING AN ITEM IN CATIA.....	22
CHAPTER 5	25
WORKING WITH CATIA V5	25
INTRODUCTION.....	25
PRODUCT STRUCTURE CATIA V5 VS. TEAMCENTER.....	25
CMI TOOLBAR.....	25
CATDRAWINGS IN CMI RII APPLICATION IN TEAMCENTER.....	26
CMI TOOLBAR: READ FROM WORKBENCH.....	27
CMI TOOLBAR: UPDATE TEAMCENTER.....	28
CMI TOOLBAR: SYNCHRONIZATION IN TEAMCENTER.....	28

CMI TOOLBAR: SAVEAS IN TEAMCENTER	31
CMI TOOLBAR: HIGHLIGHT IN WORKBENCH.....	31
CMI TOOLBAR: GET ORIGINAL GEOMETRY FROM TEAMCENTER	32
CMI TOOLBAR: ADD TEMP	32
<i>Visualize multiple revisions of an Assembly using Add Temp</i>	<i>33</i>
CMI TOOLBAR: INSERT FROM TEAMCENTER	34
CMI TOOLBAR: LOCAL SAVE AND RESTORE	34
CMI TOOLBAR: RECONNECT WITH TEAMCENTER	35
CMI TOOLBAR: CMI MANAGE CATALOGS.....	36
CMI TOOLBAR: CMI INFO.....	36
HANDLING OF CATDRAWINGS.....	37
<i>Creating a CATDrawing from a Single Model</i>	<i>37</i>
<i>Creating a CATDrawing from a Product Structure</i>	<i>38</i>
<i>Automatic Update of CATDrawing title block parameter.....</i>	<i>38</i>
HANDLING OF CGR AND MODEL FILES	40
CATALOG MANAGEMENT	41
<i>Manage Catalogs</i>	<i>41</i>
<i>Read Catalog.....</i>	<i>42</i>
<i>Update or Create Catalog.....</i>	<i>43</i>
HANDLING OF CMI ARCHIVES.....	46
HANDLING OF CATANALYSIS	51
HANDLING OF DESIGN TABLES	54
<i>Display Design Table.....</i>	<i>54</i>
<i>Create Design Table.....</i>	<i>54</i>
<i>Update Design Table.....</i>	<i>56</i>
<i>Remove Design Table</i>	<i>57</i>
SUPPORT OF CATIA V5 RELEASED CACHE	59
OPTIONAL COMMANDS	59
<i>Update Position</i>	<i>60</i>
<i>Update Parts.....</i>	<i>60</i>
<i>Restore Positions.....</i>	<i>60</i>
<i>Choose Update Position.....</i>	<i>60</i>
<i>Choose Update Geometry.....</i>	<i>61</i>
<i>Check In/Check Out</i>	<i>61</i>
<i>Dataset pseudo Revise</i>	<i>63</i>
GLOSSARY	65

Table of Figures

FIGURE 1: CATIA TEAMCENTER INTERFACE ARCHITECTURE	2
FIGURE 2: TEAMCENTER RICH CLIENT START WINDOW	5
FIGURE 3: CMI RII APPLICATION WINDOW.....	6
FIGURE 4: CMI RII APPLICATION MENU ITEMS	6
FIGURE 5: CMI RII APPLICATION MENU 'FILE'	6
FIGURE 6: CMI RII APPLICATION MENU 'EDIT'	6
FIGURE 7: THE CMI RII APPLICATION OPTIONS DIALOG	7
FIGURE 8: CMI RII APPLICATION MENU 'TOOLS'	7
FIGURE 9: CMI RII APPLICATION MENU 'WINDOW'	8
FIGURE 10: CMI RII APPLICATION MENU 'HELP'	8
FIGURE 11: CMI RII APPLICATION ABOUT DIALOG	8
FIGURE 12: CONTEXT MENU ON A BOMLINE IN THE CMI RII APPLICATION	9
FIGURE 13: CONTEXT MENU ON A DATASET IN THE CMI RII APPLICATION.....	10
FIGURE 14: STRUCTURE MANAGER APPLICATION WITH CMI RII MENU	11
FIGURE 15: STRUCTURE MANAGER MENU 'CMI - RII'	11
FIGURE 16: STRUCTURE MANAGER APPLICATION WITH SEND TO CATIA COMMAND	11
FIGURE 17: STRUCTURE MANAGER APPLICATION WITH SEND DMU TO CATIA COMMAND	12
FIGURE 18: MY TEAMCENTER APPLICATION WITH CMI RII MENU.....	13
FIGURE 19: MY TEAMCENTER MENU 'CMI - RII'	13
FIGURE 20: MY TEAMCENTER APPLICATION	13
FIGURE 21: PREDEFINED CATPRODUCT OBJECT STRUCTURE	15
FIGURE 22: PREDEFINED CATPART OBJECT STRUCTURE.....	16
FIGURE 23: EXAMPLE OF AN EXPANDED ASSEMBLY IN TEAMCENTER STRUCTURE MANAGER APPLICATION.....	17
FIGURE 24: EMPTY TEAMCENTER STRUCTURE MANAGER APPLICATION	17
FIGURE 25: STRUCTURE MANAGER APPLICATION WITH "TABLE"	18
FIGURE 26: STRUCTURE MANAGER APPLICATION WITH "TABLE", "PLATE", AND "LEG"	18
FIGURE 27: MY TEAMCENTER APPLICATION WITH "PLATE"	19
FIGURE 28: NEW DATASET DIALOG	19
FIGURE 29: MY TEAMCENTER APPLICATION WITH COMPLETE "TABLE"	20
FIGURE 30: CMI RII APPLICATION WITH COMPLETE "TABLE"	20
FIGURE 31: CATIA V5 WITH LOADED "TABLE"	21
FIGURE 32: CATIA V5 WITH UPDATED "TABLE"	21
FIGURE 33: CMI RII APPLICATION WITH COMPLETE "TABLE"	22
FIGURE 34: "TABLE" ITEM IN MY TEAMCENTER.....	22
FIGURE 35: HIGHLIGHT IN CATIA IN POP-UP MENU IN CMI RII APPLICATION.....	23
FIGURE 36: HIGHLIGHTED ITEM IN CATIA V5.....	23
FIGURE 37: PRODUCT STRUCTURE IN TEAMCENTER AND CATIA V5.....	25
FIGURE 38: CMI TOOLBAR IN CATIA V5	26
FIGURE 39: CMI RII APPLICATION WITH A CATDRAWING DATASET	26
FIGURE 40: DRAWING WORKBENCH FOR READ, UPDATE, CREATE OR SAVE AS CATDRAWING	27
FIGURE 41: DIALOG WINDOW FOR UPDATE TEAMCENTER	28
FIGURE 42: THE SYNCHRONIZE TEAMCENTER DIALOG.....	29
FIGURE 43: EDIT NEW PDM-PART CATEGORY DIALOG	30
FIGURE 44: THE SYNCHRONIZATION IN TEAMCENTER DIALOG WITH SUCCESS.....	31
FIGURE 45: DO NOT ACTIVATE DEFAULT SHAPES ON OPEN OPTION IN CATIA V5	32
FIGURE 46: RECONNECT DIALOG	35
FIGURE 47: INFORMATION DIALOG WINDOW FOR CATPRODUCT WITH "MORE ATTRIBUTES".....	36
FIGURE 48: CMI INFORMATION FOR MULTIPLE ITEMS.....	37
FIGURE 49: OPTIONS DIALOG IN TEAMCENTER	38
FIGURE 50: CATDRAWING PARAMETER IN CATIA V5.....	39
FIGURE 51: MANAGE REPRESENTATION DIALOG OF CATIA V5.....	40
FIGURE 52: MANAGE REPRESENTATION DIALOG OF CATIA V5 WITH NEW MODEL FILE	40
FIGURE 53: SELECT CATALOG FOR BROWSING DIALOG	41
FIGURE 54: BOLT CATALOG OPENED IN CATIA.....	42

FIGURE 55: SELECT CATALOG FOR EDITING DIALOG	42
FIGURE 56: EDIT CATALOG IN CATIA	43
FIGURE 57: SYNCHRONIZE CATALOG DIALOG.....	44
FIGURE 58: CONFIRMATION DIALOG FOR UNKNOWN ENTRIES IN THE SYNCHRONIZE CATALOG COMMAND.....	45
FIGURE 59: SYNCHRONIZE CATALOG WITH SUCCESS	45
FIGURE 60: ITEM 000160 IN THE CMI RII APPLICATION WINDOW	46
FIGURE 61: LOADED ITEM 000160 IN CATIA V5.....	46
FIGURE 62: CMI ARCHIVE ROOT PRODUCT WITH THREE CHILDREN.....	47
FIGURE 63: CREATE CMI ARCHIVE DATASET DIALOG.....	47
FIGURE 64: UPDATE PARENT PRODUCT MESSAGE BOX	47
FIGURE 65: CMI MESSAGES WINDOW	48
FIGURE 66: CMI ARCHIVE ITEM IN TEAMCENTER.....	48
FIGURE 67: CMI ARCHIVE INFORMATION	49
FIGURE 68: MODIFY NON CATIA CMI ARCHIVE CONTENT	49
FIGURE 69: EXISTING ITEM IN TEAMCENTER	51
FIGURE 70: ITEM LOADED BY CMI	51
FIGURE 71: CMI PRODUCT WITH EXISTING CATANALYSIS.....	52
FIGURE 72: CATIA WORKBENCH AFTER EXPAND MODEL ON PART NUMBER	52
FIGURE 73: CMI RII APPLICATION WITH CMI ARCHIVE	53
FIGURE 74: EXISTING CMI ARCHIVE WITH CATANALYSIS LOADED BY CMI.....	53
FIGURE 75: CATIA SETTING FOR DISPLAYING RELATIONS IN THE STRUCTURE TREE	54
FIGURE 76: CATPART WITH DESIGN TABLE.....	55
FIGURE 77: SYNCHRONIZE DIALOG WITH CREATE DESIGN TABLE OPERATION	55
FIGURE 78: SYNCHRONIZE DIALOG WITH CREATION RESULT FROM TEAMCENTER	55
FIGURE 79: DESIGN TABLE OBJECT IN TEAMCENTER	56
FIGURE 80: EDIT DESIGN TABLE DIALOG IN CATIA	56
FIGURE 81: OPENED DESIGN TABLE FILE.....	56
FIGURE 82: KNOWLEDGE REPORT IN CATIA	57
FIGURE 83: CHANGED GEOMETRY IN CATIA.....	57
FIGURE 84: SUCCESS MESSAGE FROM TEAMCENTER	57
FIGURE 85: CATPART WITHOUT DESIGN TABLE	58
FIGURE 86: SYNCHRONIZE DIALOG BEFORE DROP OPERATION	58
FIGURE 87: SUCCESS DIALOG FROM TEAMCENTER	58
FIGURE 88: TOOLS→ OPTIONS DIALOG IN CATIA	59
FIGURE 89: CHOOSE MATRIX TO UPDATE DIALOG.....	60
FIGURE 90: CHOOSE MODEL TO UPDATE DIALOG	61
FIGURE 91: CHECK IN/CHECK OUT DIALOG.....	62
FIGURE 92: GENERAL PROCESS OF "PSEUDO REVISE" FOR CAD DATASETS	63

CHAPTER 1

Overview

This chapter provides basic information about the *CATIA Teamcenter Interface* and lists some features of this application interface.

Introducing CMI (CATIA Teamcenter Interface)

The *CATIA Teamcenter Interface* (CMI RII) was developed by T-Systems as a high-end integration between the CAD system *CATIA V5* and the PDM system *Teamcenter*. With this interface it is possible to manage *CATIA V4* and *CATIA V5* models and assemblies in *Teamcenter* and *CATIA V5*.

CATIA V5 uses assemblies similar to *Teamcenter*. CMI RII makes a bidirectional mapping between the *Teamcenter* structure and the *CATIA V5* structure. So users have the full functionality of *Teamcenter* and *CATIA V5*.

CMI RII joins the advantages of CAD with PDM

The *CATIA Teamcenter Interface* combines the CAD Excellency of *CATIA* with the power of the PDM system *Teamcenter*. It provides the user with a more sophisticated way of working with *CATIA* by allowing the management of product structures and multiple level assembly structures within the PDM system.

The *CATIA Teamcenter Interface* (CMI RII) permits:

- Integration of *CATIA* data in workflow (e.g. release control);
- Management of *CATIA* data in vaults, without knowledge about the underlying file system;
- Updating concurrent engineering processes by different users;
- Distribution of *CATIA* data in a network;
- Simultaneous management of *CATIA* data and structures;
- Construction of part structures within *Teamcenter*;
- Modification of the position of the structures;
- Search for *CATIA* data by different attributes.

CMI Architecture

The following figure explains the architectural basics of the CATIA Teamcenter Interface (CMI RII).

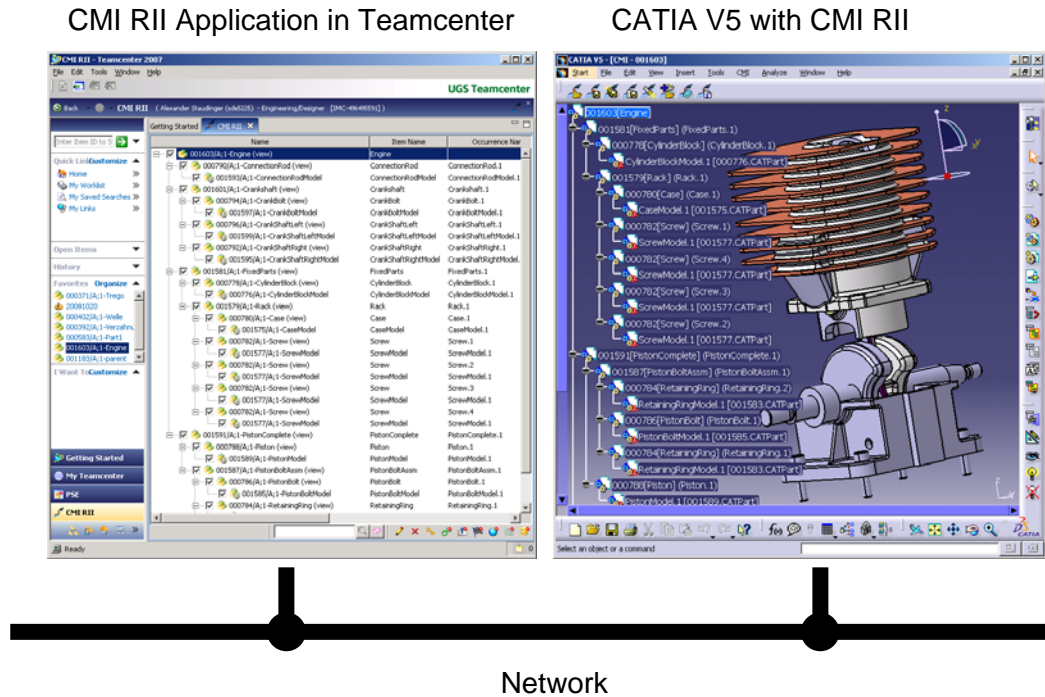


Figure 1: CATIA Teamcenter Interface architecture

The user can expand an assembly within the CMI RII Application and send this assembly to CATIA V5. After changing geometries and/or positions in CATIA the user can update the assembly in Teamcenter.

CHAPTER 2

Getting Started

This chapter describes how to start CATIA within the Teamcenter environment and also how to enable the CMI functionality within CATIA V5.

Assumptions



Some assumptions, for a better understanding of the descriptions and examples:

CATIA V5 should display the CMI toolbar:



UNIX:

Start CATIA V5 with the command `cmicatstart.sh`

Windows:

Make sure you have set up the right environment (refer to Installation and Administration Guide). Launch CATIA V5 with the command:

`CNEXT.exe -env CatiaCMIEnv -direnv "C:\<path to the CMIEnv>"`

Starting Applications

Before working with CMI RII it is necessary to start the Teamcenter Rich Client, the Teamcenter user interface, and the CATIA V5.

For information on starting Teamcenter Rich Client see the Teamcenter Help Library – Getting Started with Teamcenter provided by Siemens PLM.

For information on starting the CATIA User Interface see the CATIA Solutions User's Guide.



It makes no difference if Teamcenter or CATIA is started first.

Enabling the CMI toolbar in CATIA V5



In CATIA V5, select the menu **View→Toolbars→CMI**.



If the CMI toolbar is not in the list of toolbars, a problem with the installation may have occurred. In this case, contact the *administrator*. Information about this kind of problem can be found in the Installation Manual.

CHAPTER 3

The CMI RII Application

This chapter introduces the *CMI RII application* with a general explanation and then by listing its functions. The goal of this chapter is to make the user familiar with this component. The *CMI RII application* functions will be explained in subsequent chapters.

What is the CMI RII Application?

The *CMI RII application* is a Teamcenter application used to interactively prepare an assembly structure for sending to CATIA and to provide several manipulation facilities for the CMI commands found in CATIA. The entire data interchange between Teamcenter and CATIA is achieved via the *CMI RII application*.

CMI RII defines some new dataset types in Teamcenter that can be used to manage CATIA V5 files (CATPart, model, cgr, CATProduct, and CATDrawing). The management of CATIA V5 files is described in [Chapter 5](#).



The CMI RII application has to be started in Teamcenter before you can call the functions of CMI RII.

To start the *CMI RII application* use the standard Teamcenter start mechanism as shown in Figure 2.

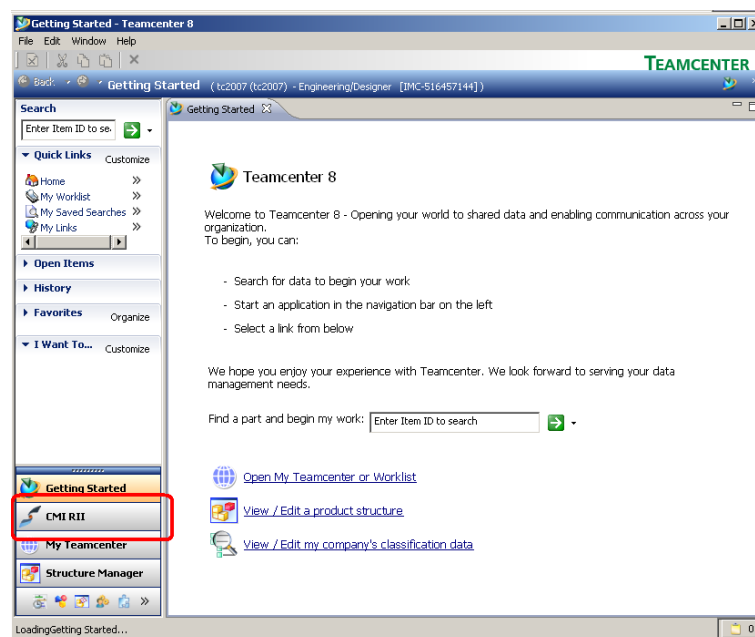


Figure 2: Teamcenter Rich Client start window

A window with the CMI RII application will appear after logging in in the PDM system Teamcenter (see Figure 3).

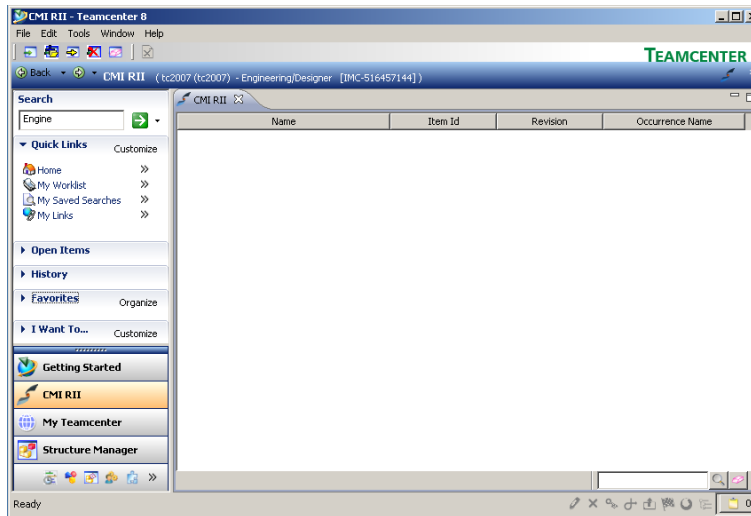


Figure 3: CMI RII application window

The CMI RII Application Menu

Below the CMI RII application menu items will be described.



Figure 4: CMI RII application menu items

Menu item File

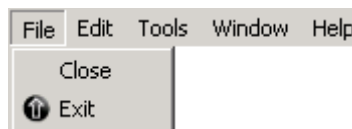


Figure 5: CMI RII application menu 'File'

The menu item *File*→*Close* will close the CMI RII application.

The menu item *File*→*Exit* will exit the Rich Client application.

Menu item Edit

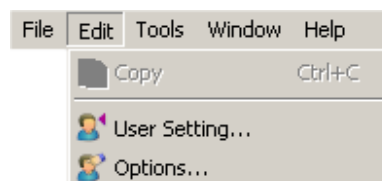


Figure 6: CMI RII application menu 'Edit'

The menu item *Edit*→*User Setting ...* will open the User Setting dialog of the Rich Client application.

The menu item *Edit*→*Options ...* will open the Preferences dialog of the Rich Client application.

The CMI RII preferences show the CMI RII options (see Figure 7).

- **Send Drawings To CATIA**
Checked if drawings (CATDrawing) should be sent to CATIA.
- **Transfer CGR files To CATIA**
 - No No CGR are sent to CATIA
 - Only CGR Only CGR are sent to CATIA
 - CGR + geometry CGR and geometry files are sent to CATIA
- **Work with CATIA Version**
 - V5 work with CATIA V5
 - V4 work with CATIA V4

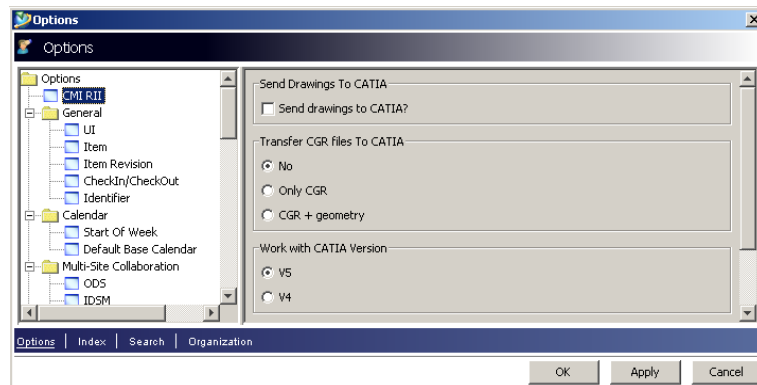


Figure 7: The CMI RII application options dialog

Menu item Tools

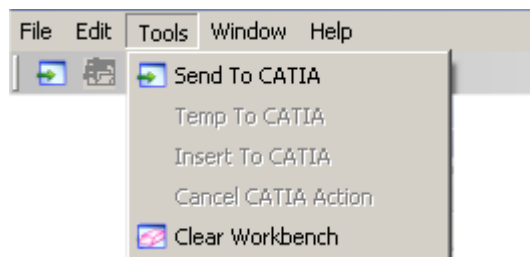


Figure 8: CMI RII application menu 'Tools'

The menu item *Tools*→*Send To CATIA* starts the Read To CATIA Action and will read the CMI RII application content to the CATIA.

The menu item *Tools*→*Temp To CATIA* starts the Add Temp To CATIA Action and will read the temporary added items to the CATIA. This menu item is only usable if the Add Temp action is started from the CATIA.

The menu item *Tools*→*Insert To CATIA* starts the Insert To CATIA Action and will read the queried items to the CATIA. This menu item is only usable if the Insert from Teamcenter action is started from the CATIA.

The menu item *Tools*→*Cancel CATIA Action* cancels actions which are started from CATIA. (e.g. *SaveAs* and *AddTemp*). This menu item is only usable if an action is started from the CATIA (e.g. *SaveAs* and *AddTemp*).

The menu item *Tools*→*Clear Workbench* removes all items from the CMI RII application window.

Menu item Window

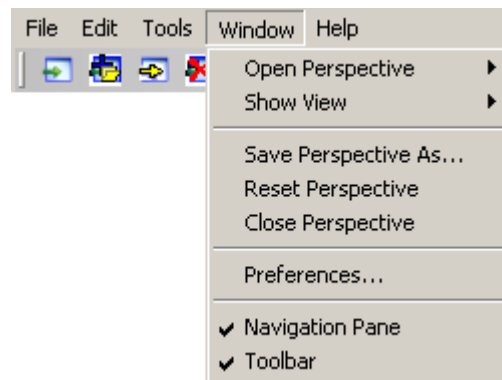


Figure 9: CMI RII application menu 'Window'

The menu item *Window* includes the standard menu items provided by the Teamcenter Rich Client application.

Menu item Help

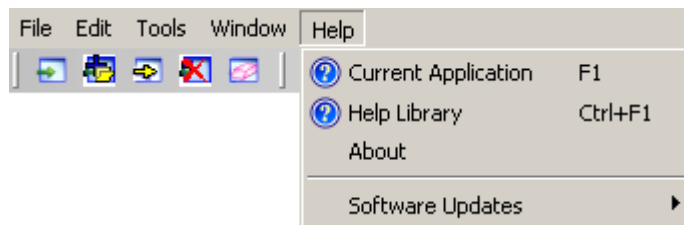


Figure 10: CMI RII application menu 'Help'

The menu item *Help* points to the standard application Help provided by the Teamcenter Rich Client Application.

The menu item *Help* → *About* opens the About dialog.

The About dialog informs about the actual CMI RII application (see Figure 11).

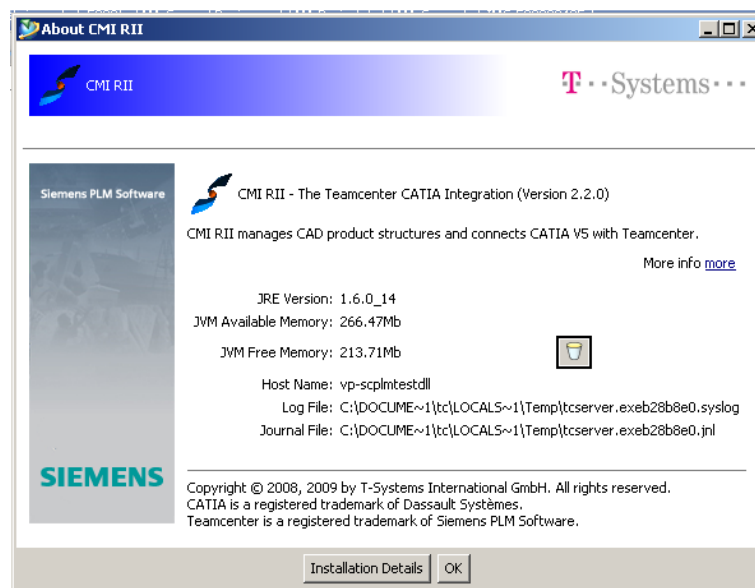





Figure 11: CMI RII application About dialog.

Pop-Up menus of CMI RII Items

If you select an Item and *drop it into*, or *Send it to* the CMI RII application, a BOMLine will be created dynamically. Items which will be handled as geometry items are represented by , structure elements are represented by . If you select a Drawing dataset and *drop it into*, or *Send it to* the CMI RII application a dataset is shown in the CMI RII application. The Drawing dataset is represented by .

Items in the CMI RII Application

On the Item objects displayed in the CMI RII application window there are the following functions available:

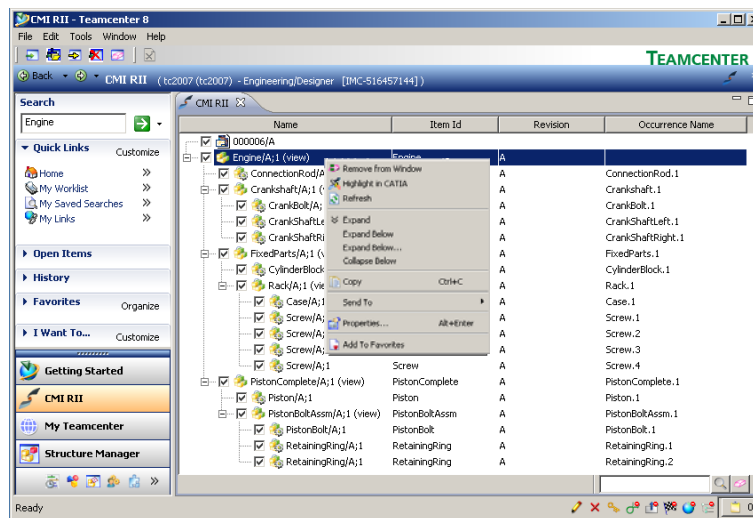


Figure 12: Context menu on a BOMLine in the CMI RII application



The *Remove from Window* command is only available on top level elements.

Remove from Window	Removes the selected object from the CMI RII application window.
Highlight in CATIA	Highlights the selected objects in CATIA.
Refresh	Refreshes the selected object from the database.
Expand	Expands the object one level.
Expand Below	Expands the object multiple levels.
Expand Below...	Expands the object multiple levels, a dialog will be displayed where the level number can be defined.
Collapse Below	Collapses all children.
Copy	Copies the selected object to the clipboard.
Send To	Sends the selected object to another Teamcenter application.
Properties...	Displays the Teamcenter properties dialog.
Add To Favorites	Adds the selected object to the favorites list on the left.

Models in the CMI RII Application

On the Dataset (CATDrawing) objects displayed in the CMI RII application window there are the following functions available:

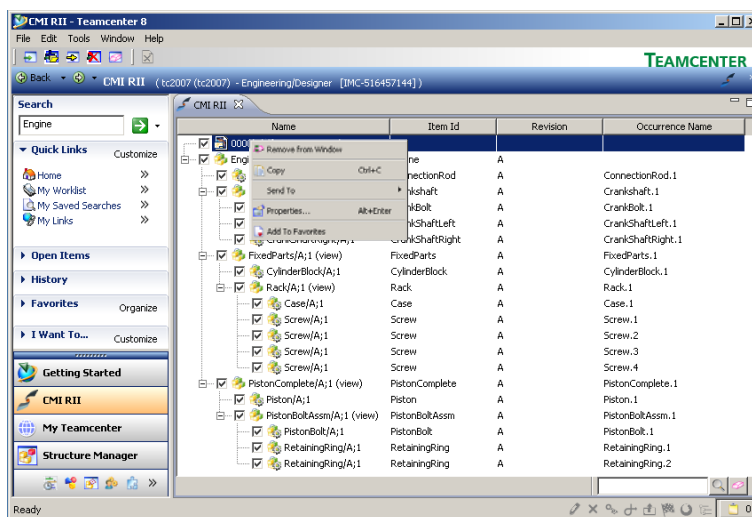


Figure 13: Context menu on a Dataset in the CMI RII application

Remove from Window

Removes the selected object from the CMI RII application window.

Copy

Copies the selected object to the clipboard.

Send To

Sends the selected object to another Teamcenter application.

Properties...

Displays the Teamcenter properties dialog.

Add To Favorites

Adds the selected object to the favorites list on the left.

Enhancements in the Structure Manager Application

This section introduces the enhancements in the Structure Manager Application by listing its functions.

CMI RII Menu bar in the Structure Manager Application

The Structure Manager application menu is enhanced by a new CMI – RII menu item (Figure 14).

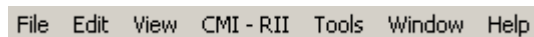


Figure 14: Structure Manager application with CMI RII menu

Menu item CMI – RII

The menu item CMI – RII (Figure 15) contains two commands to send data to CATIA.



Figure 15: Structure Manager menu 'CMI - RII'

CMI – RII → Send To CATIA

The menu item CMI – RII → Send To CATIA will send the expanded Structure Manager content to CATIA.



The Send To CATIA command will send the content of the current active Structure Manager application window to CATIA. Only expanded structures will be sent to CATIA. Unexpanded structures will not be sent to CATIA.

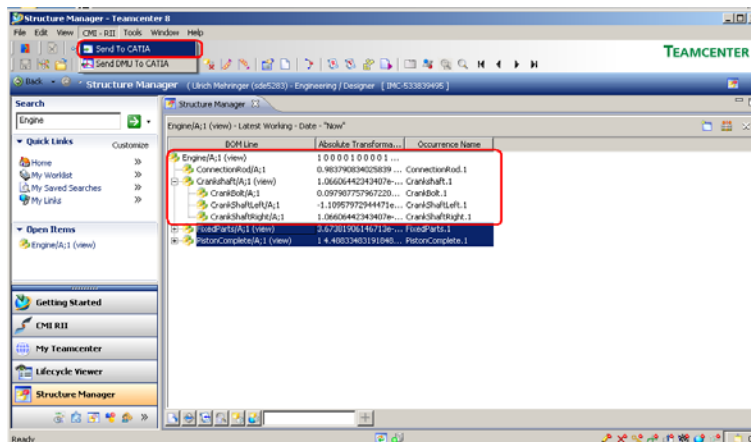


Figure 16: Structure Manager application with Send To CATIA command

Only the expanded structures from the example structure in Figure 16 will be sent to CATIA. The selected items *FixedParts* and *PistonComplete* are not expanded and the substructures of these items are not sent to CATIA.

CMI – RII → Send DMU To CATIA

The menu item *CMI – RII → Send DMU To CATIA* will send the DMU ‘marked’ Structure Manager content to CATIA.



The *Send DMU To CATIA* command will send the checked content (checkboxes are presented by the viewer functionality) of the current active Structure Manager application window to CATIA. Only checked structures will be sent to CATIA. Unchecked structures will not be sent to CATIA.

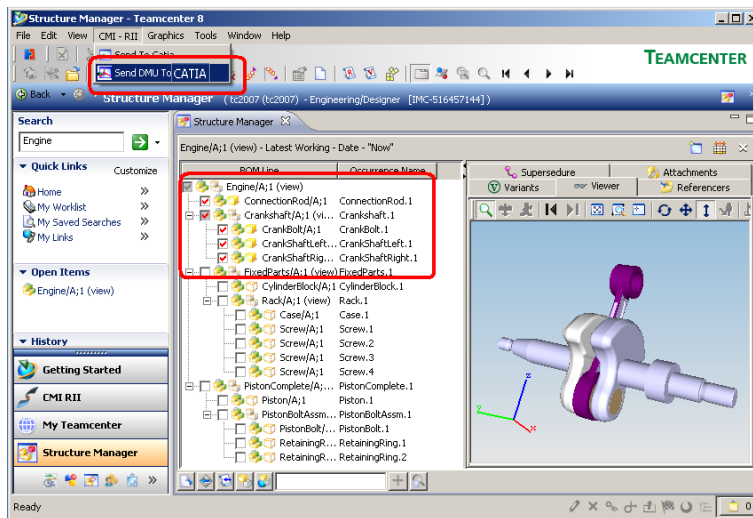


Figure 17: Structure Manager application with Send DMU To CATIA command

Only the checked items from the example structure in Figure 17 will be sent to CATIA. The unchecked structures *FixedParts* and *PistonComplete* will not be sent to CATIA.

Enhancements in the My Teamcenter Application

This section introduces the enhancements in the My Teamcenter application by listing its functions.

CMI RII Menu bar in the My Teamcenter Application

The My Teamcenter application menu is enhanced by a new CMI – RII menu item (Figure 18).

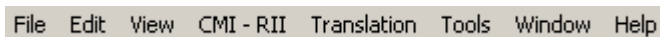


Figure 18: My Teamcenter application with CMI RII menu

Menu item CMI – RII

The Menu item CMI – RII (Figure 19) contains a command to send data to CATIA.

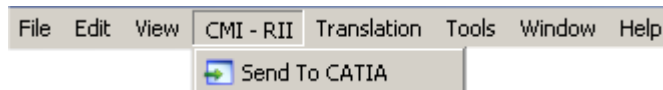


Figure 19: My Teamcenter menu 'CMI - RII'

CMI – RII → Send To CATIA

The menu item *CMI – RII* → *Send To CATIA* will send the selected My Teamcenter objects to CATIA.

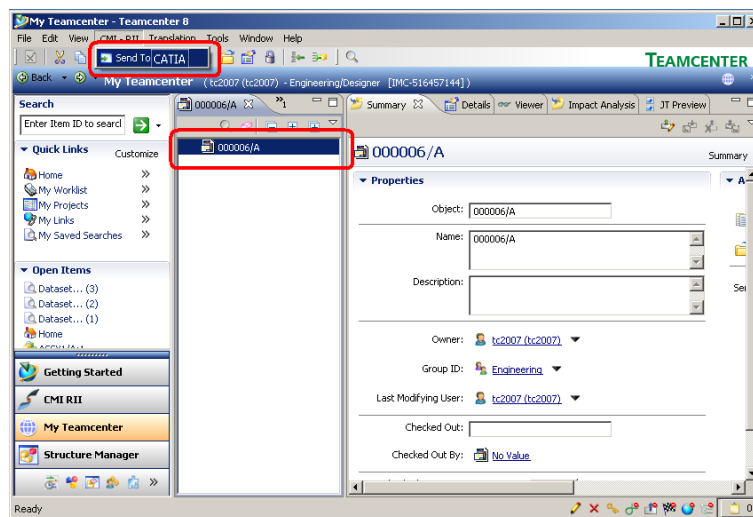


Figure 20: My Teamcenter application



The *Send To CATIA* command will send the selected objects (see Figure 20) of the current active My Teamcenter application window to CATIA. Only CATDrawings are supported now.

CHAPTER 4

CATIA relevant Objects in Teamcenter

This chapter describes how to handle CATIA relevant data in Teamcenter.

Predefined Object Structure

The *CATIA Teamcenter Interface (CMI RII)* uses the following predefined object structure for CATProducts.

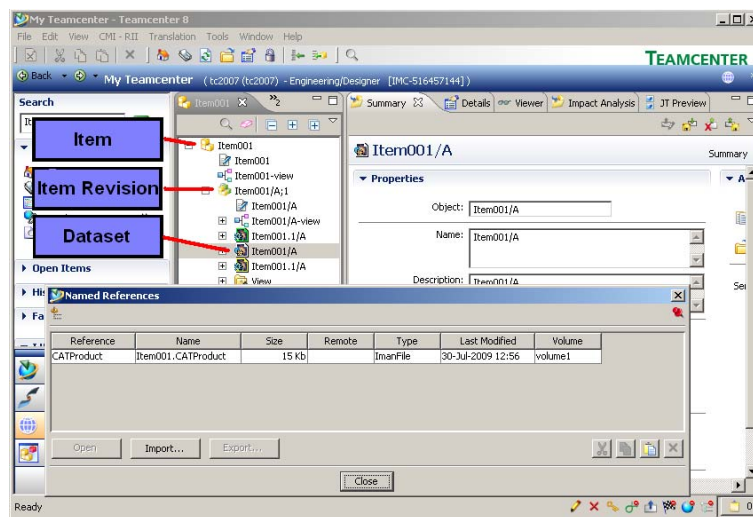


Figure 21: Predefined CATProduct object structure

An Item Revision has a Dataset attached of the type CMIStructure. The Dataset has exactly one Named Reference of the type CATProduct. This will be loaded to CATIA as a CATProduct.



If no Dataset is attached to the Item Revision, a new Product is created in CATIA with the Read operation.

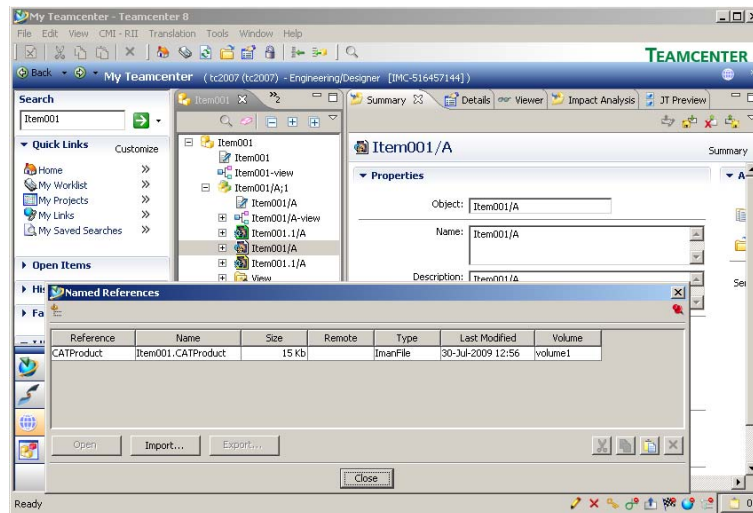


Figure 22: Predefined CATPart object structure

An Item Revision has a Dataset attached of the type CMI3DGeo. The Dataset has exactly one Named Reference of the type CATPart. This will be loaded to CATIA as a CATPart.



If an empty Dataset of the type CMI3DGeo is attached to the Item Revision, a new CATPart is created in CATIA with the Read operation.

Named References of the type CMI3DGeo can handle references of the type *model* and *cgr* which will be loaded in CATIA with the Read operation.

'model' is used for V4 CATIA model files.

'cgr' is used for light geometry representation files.

Working with Structures

A structure is made of one or more items.

An item can contain other items.

Creating an Item

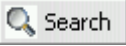


In a Teamcenter Rich Client (e.g. *My Teamcenter* or *Structure Manager* application) select *File*→*New*→*Item...*

The Item creation wizard is started and guides you through the Item Creation Process.

Searching for Items



In a Teamcenter Rich Client (e.g. *My Teamcenter* application) press the  button.

In the Search window use the Predefined Search for Items. The result is displayed in the *My Teamcenter* application.

Creating a Structure

To create or modify a structure in Teamcenter use the *Structure Manager* application.

The figure below shows an example assembly with expanded items in the Structure Manager application browser.

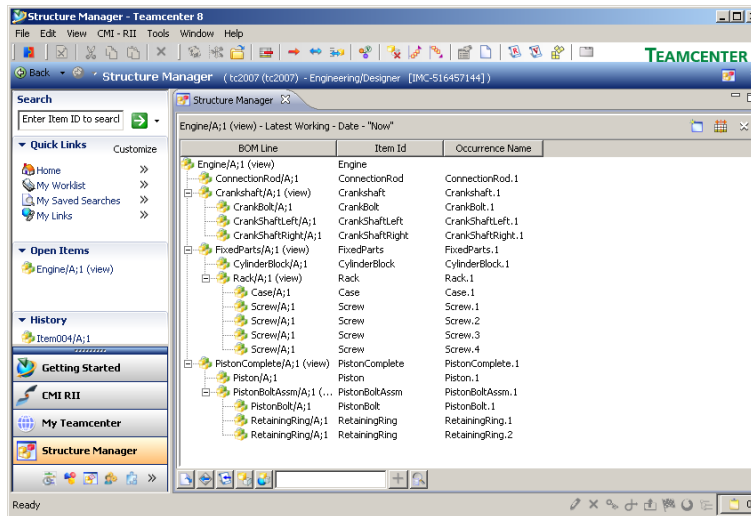


Figure 23: Example of an expanded assembly in Teamcenter Structure Manager application

Example Structure for CMI

The following instructions describe step by step how to create an example assembly structure which can then be loaded into the CATIA session:



Start the Structure Manager application in Teamcenter Rich Client (Figure 24).

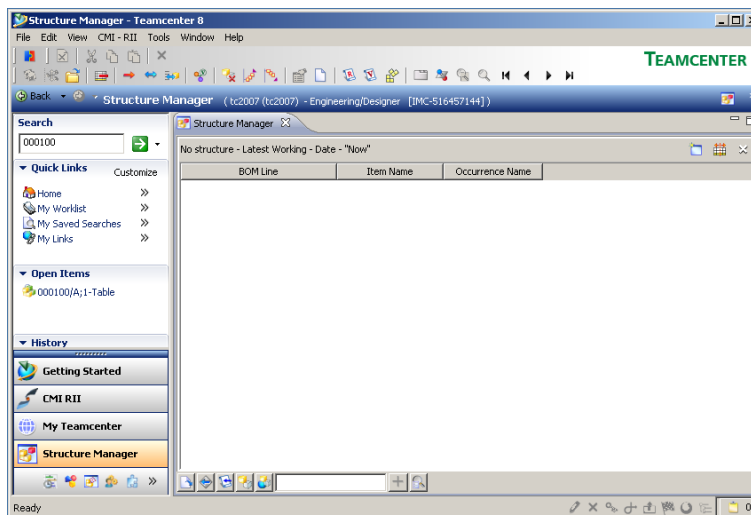


Figure 24: Empty Teamcenter Structure Manager application



Create a new item named "Table" with *File*→*New*→*Item...*

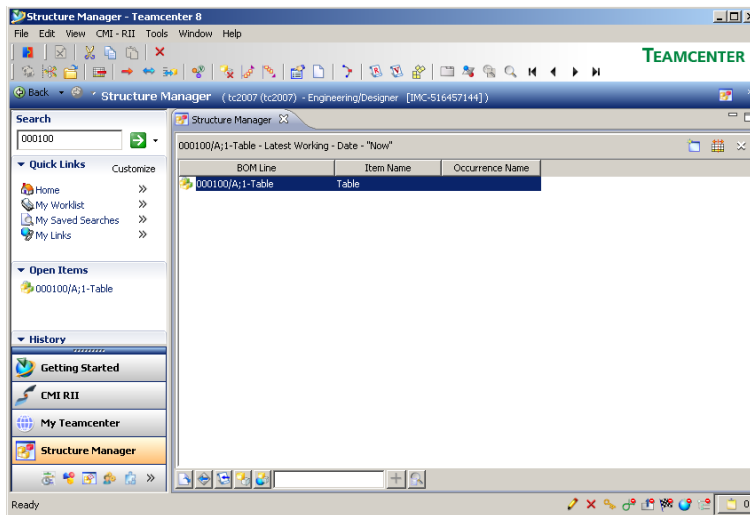


Figure 25: Structure Manager application with “Table”



Select the “Table” and create a new item named “Plate” with *File* → *New* → *Item...*

Select the “Table” and create a new item named “Leg” with *File* → *New* → *Item...*

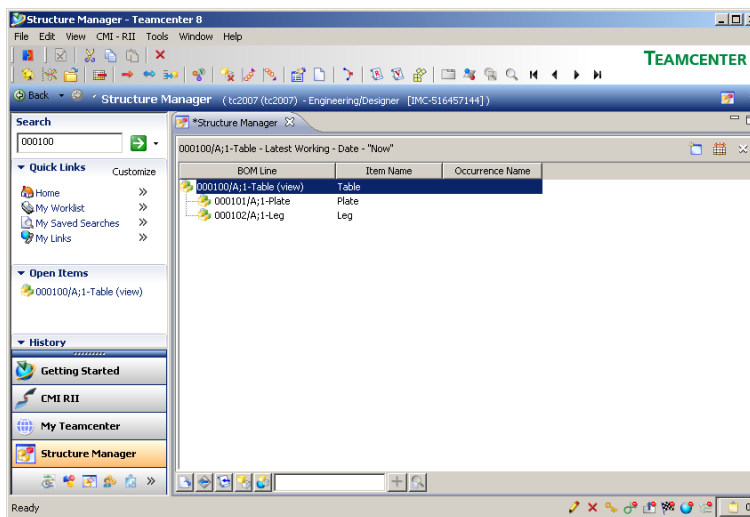


Figure 26: Structure Manager application with “Table”, “Plate”, and “Leg”



Select the “Plate”, and right click *Send To* → *My Teamcenter*.

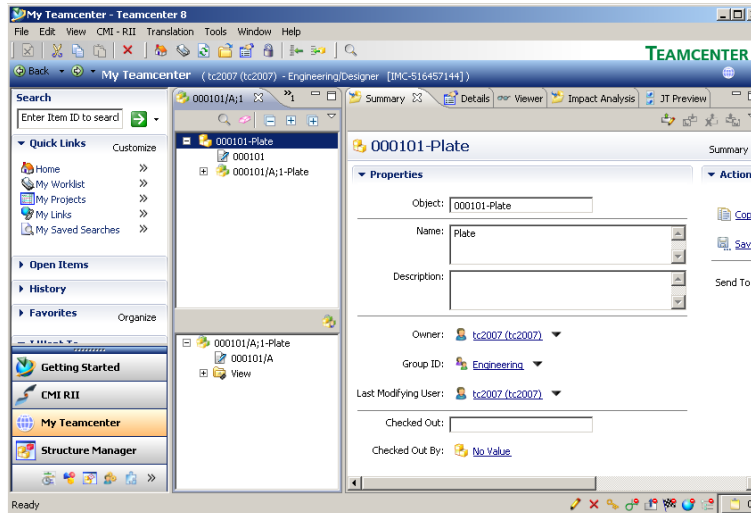


Figure 27: My Teamcenter application with “Plate”



Select the Item Revision “xxxxx/A;1 – Plate” and use the command *File*→*New*→*Dataset* to create a new dataset of type CMI3DGeo to define a geometry.
 Use the *More...* button on the left side to select the type CMI3DGeo.
 The CMICatiaV5 Tool is set automatically.
 Press the OK button to continue.

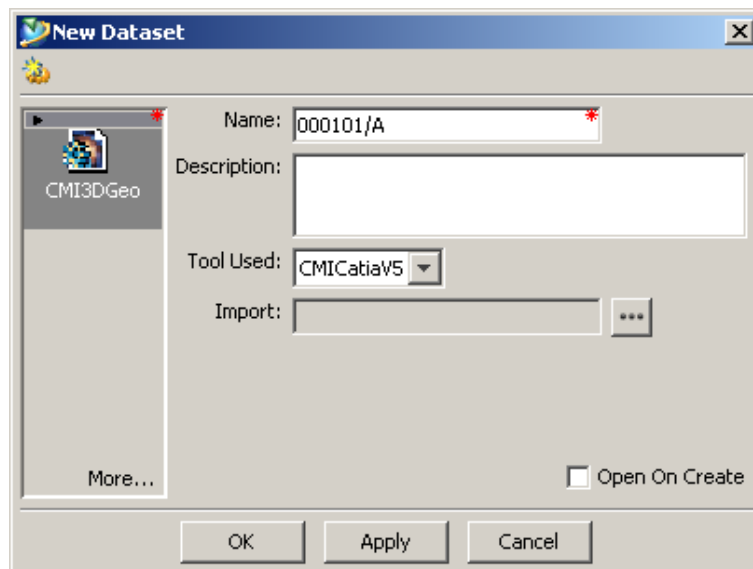


Figure 28: New Dataset dialog



Repeat the same procedure for the “Leg” item and switch to the Structure Manager application.



Select the “Leg” of the “Table” in the Structure Manager application and copy the item with *Edit*→*Copy*.

Select the “Table” item and paste the “Leg” item three times with *Edit*→*Paste*.

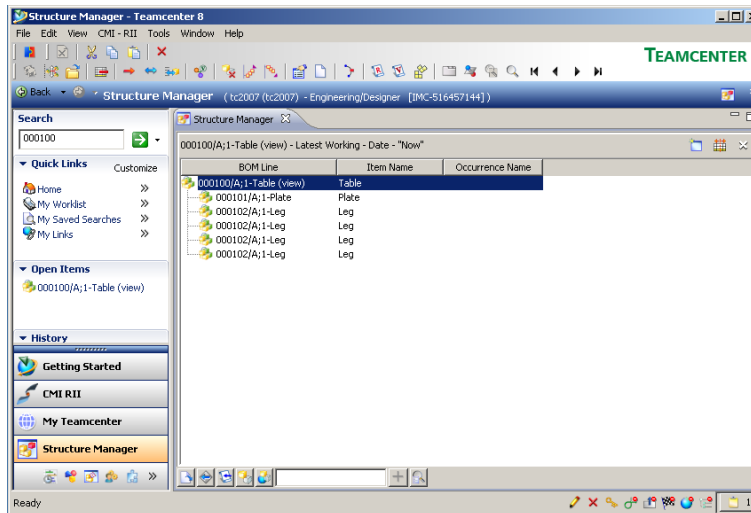


Figure 29: My Teamcenter application with complete “Table”



Check that CATIA is started with installed CMI RII.



Select the “Table” in the Structure Manager application and right click *Send To*→*CMI RII*.



Select the “Table” in the CMI RII application and right click *Expand Below*.

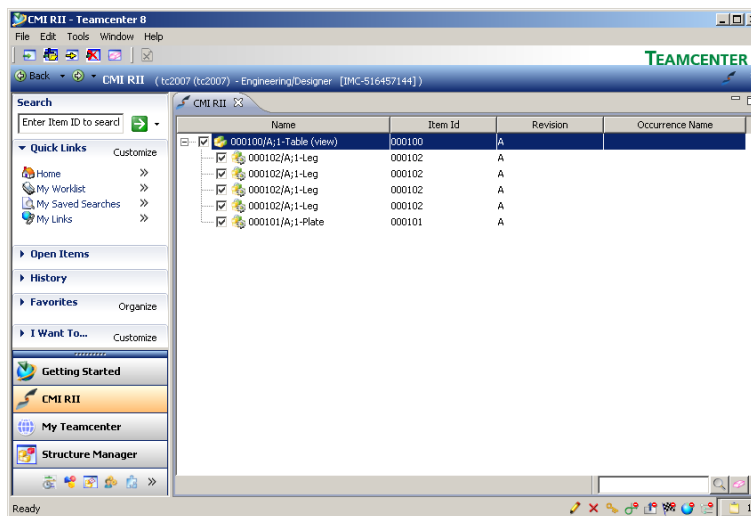


Figure 30: CMI RII application with complete “Table”



Verify that all items are checked. Only checked and expanded items will be sent to CATIA.



Use the *Tools*→*Send To CATIA* command to send the content to CATIA.

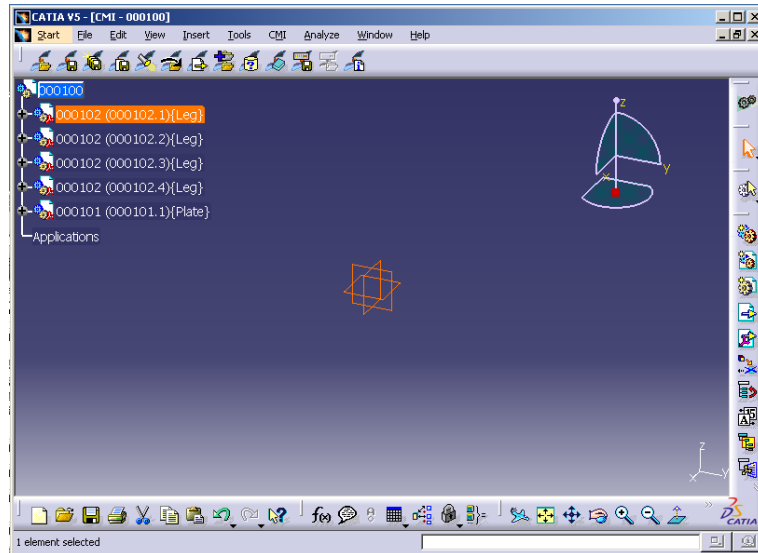


Figure 31: CATIA V5 with loaded “Table”

Updating a Structure



Complete construction in CATIA and press the Update button in CATIA V5.

The files in CATIA and the metadata are updated to Teamcenter.

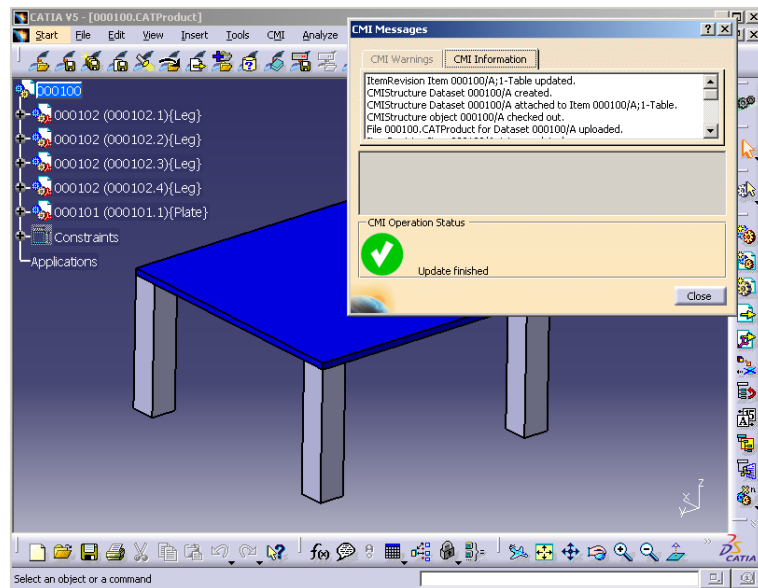


Figure 32: CATIA V5 with updated “Table”



Change the visible attributes in the CMI RII application and check the values for Occurrence name and Matrices. Both attributes are filled with the current CATIA data.

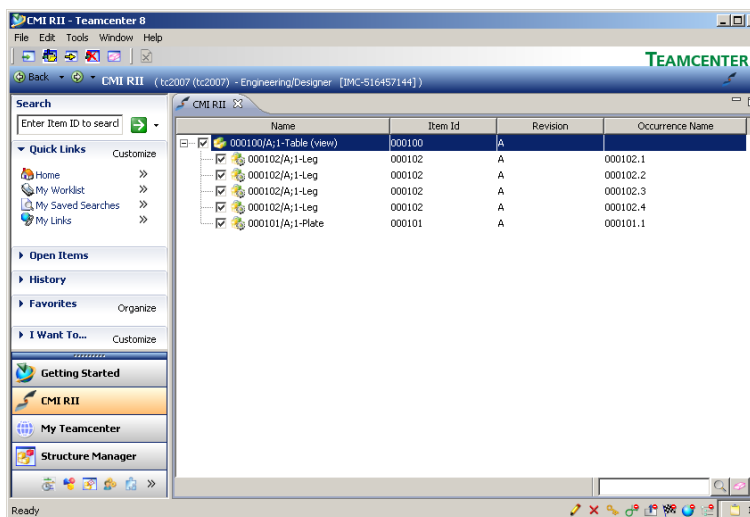


Figure 33: CMI RII application with complete “Table”



Select the “Plate” and right click *Send To*→*My Teamcenter*.
Verify that the dataset and a named reference are added.

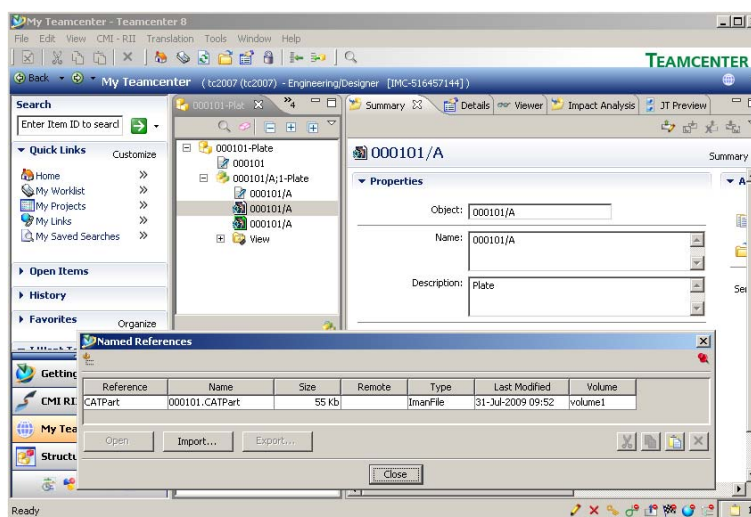


Figure 34: “Table” item in My Teamcenter

Highlighting an Item in CATIA

In cases where you have loaded an assembly structure to CATIA as described in the steps above, it may be useful to find the corresponding model in the CATIA session of an item displayed within the CMI RII application.

For this purpose, it is possible to highlight CATIA models in CATIA using the currently selected item in the CMI RII application.



In the CMI RII application, select the item you want to be highlighted in the CATIA session and choose the *Highlight in CATIA* option in the Pop-Up menu.

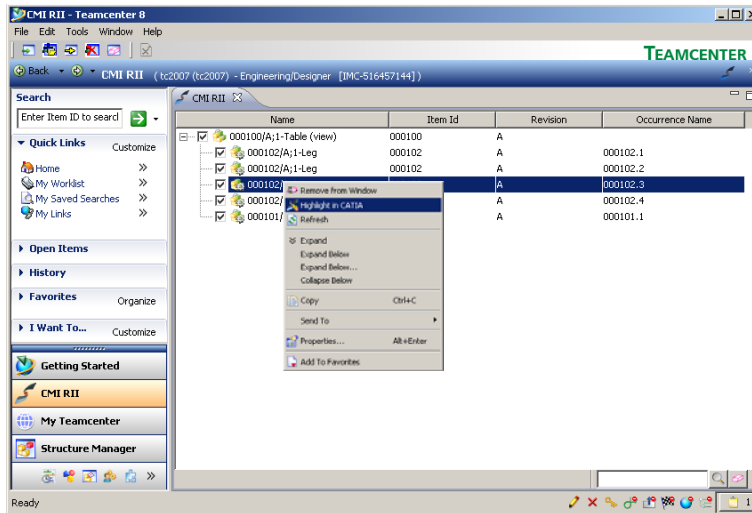


Figure 35: Highlight in CATIA in Pop-Up menu in CMI RII application



CATIA comes to the foreground with the selected CATIA model highlighted.

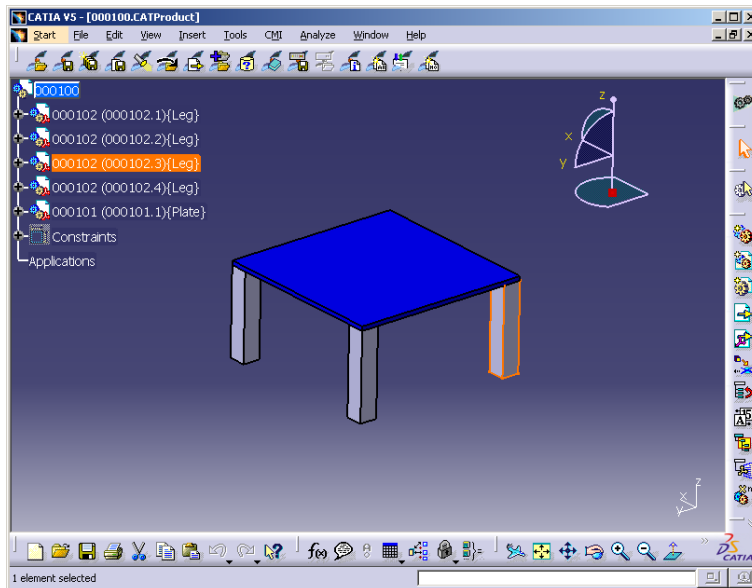


Figure 36: Highlighted item in CATIA V5

CHAPTER 5

Working with CATIA V5

Introduction

This chapter describes the CMI interface between CATIA V5 and Teamcenter. Typical tasks discussed are loading items/structures/drawings stored in Teamcenter into *CATIA V5* and creating/updating parts and drawings in Teamcenter. One of the main subsections deals with creating and saving CATIA V4 models.

Product Structure CATIA V5 vs. Teamcenter

Product structures in Teamcenter correspond well to product structures found in CATIA V5. The following graphic illustrates the product structure in Teamcenter and CATIA V5.

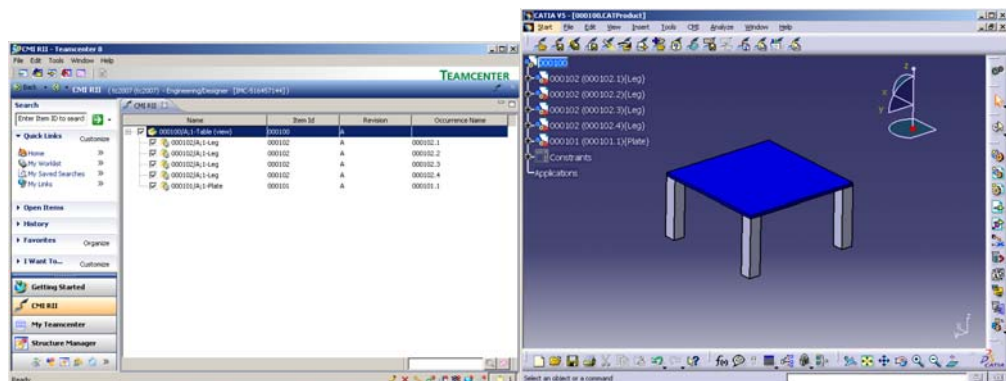


Figure 37: Product Structure in Teamcenter and CATIA V5

CMI Toolbar

The following figure shows the toolbars of the CATIA V5 CMI module. Descriptions of the toolbar and the command icons follow below.

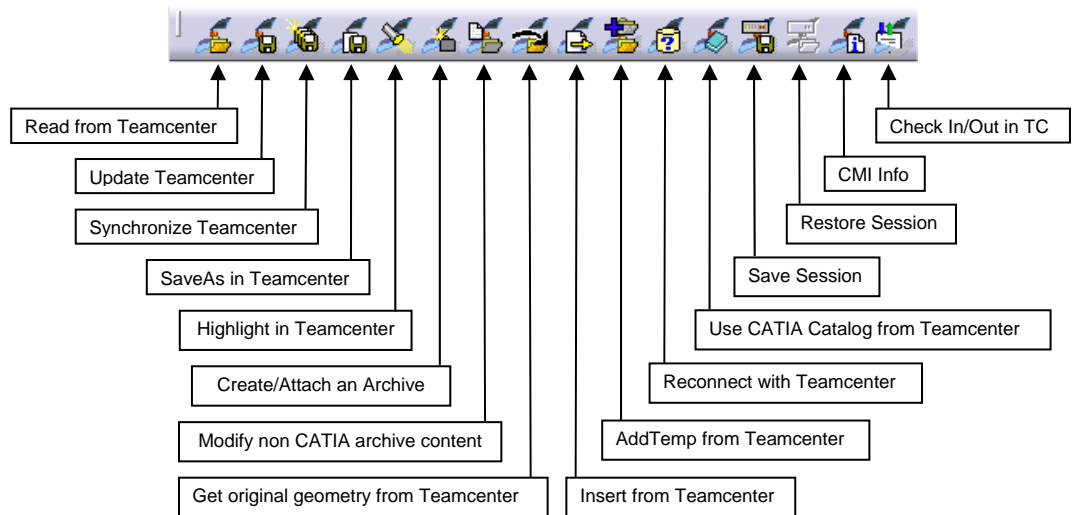


Figure 38: CMI Toolbar in CATIA V5

With the *CMI toolbar* it is possible to read files from the *CMI RII application* in Teamcenter. You can then modify the geometry in your CATIA V5 session. The modifications can be updated in Teamcenter via the 'Update Teamcenter' or the 'Synchronize Teamcenter' button in CATIA V5.

The icon 'Highlight in Teamcenter' is only active if you are working with a product structure.

You can get the Teamcenter information of the CATParts, CATProducts, CATDrawings, and CATIA V4 Models with the CMI Info button if you loaded the product structure with CMI to CATIA V5.

The other commands will be described in more detail later in this chapter.

CATDrawings in CMI RII Application in Teamcenter

CATIA V5 will read all expanded assemblies, single CATDrawings from the Teamcenter CMI RII application.

The following figure shows a CATDrawing in the CMI RII application:

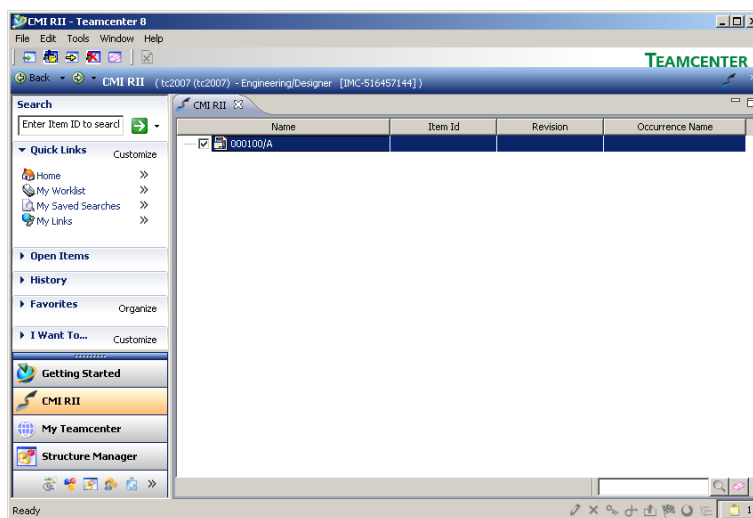


Figure 39: CMI RII application with a CATDrawing dataset

When you have transferred a CATDrawing from Teamcenter to CATIA V5 via the CMI RII application, the drawing will be displayed in CATIA V5 in a new window.

CMI for CATIA V5 also supports CATIA V4 models and CATIA V5 Drawing files (CATDrawings). CATDrawings may be included in assembly structures in Teamcenter, however in CATIA V5 they will be displayed in separate windows as shown in the figure below.

All normal CMI functions (Read, Update, Create, and Save As) may be used with CATDrawings and CATParts within CATIA V5.

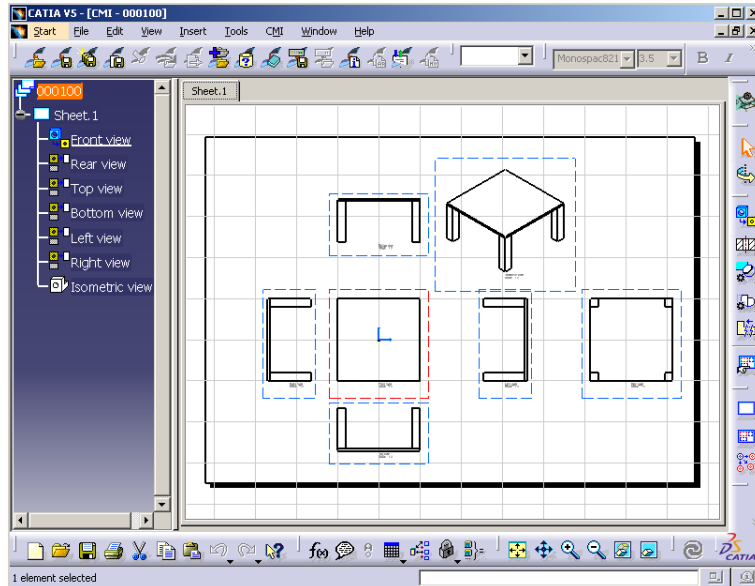


Figure 40: Drawing Workbench for Read, Update, Create or Save As CATDrawing

CMI toolbar: Read From Workbench



With the 'Read from Workbench' button in the CMI Toolbar the content of the CMI RII application in Teamcenter may be read into CATIA V5. The CMI RII application may contain CATDrawings, and assembly structures.


If you want to send one or more assemblies, CATParts or CATDrawings to CATIA V5 follow these instructions:



Drag and drop, Send drawings (CMI2DGeo datasets) or assemblies (items) into CMI RII.

Expand or Deexpand the assemblies in the CMI RII application. Only those items that are shown in the CMI RII application will be opened in CATIA.



Read Teamcenter CATIA items with the *Read From Workbench* icon .

Every top-level item in the CMI RII application will be opened in a separate browser in CATIA V5.



If the Structure Manager application is the current active application in the Teamcenter Rich Client the Structure Manager content will be read to CATIA instead of the content of the CMI RII application.

CMI toolbar: Update Teamcenter



This command updates geometry and position information in Teamcenter.



Modify the content in CATIA.

Write the modifications back with *Update Teamcenter* icon .



All files in the assembly and the position information (transformation matrix) which have been modified in CATIA will be updated in Teamcenter.

The success (green icon) and more detailed information (Figure 41) are then displayed to the user.

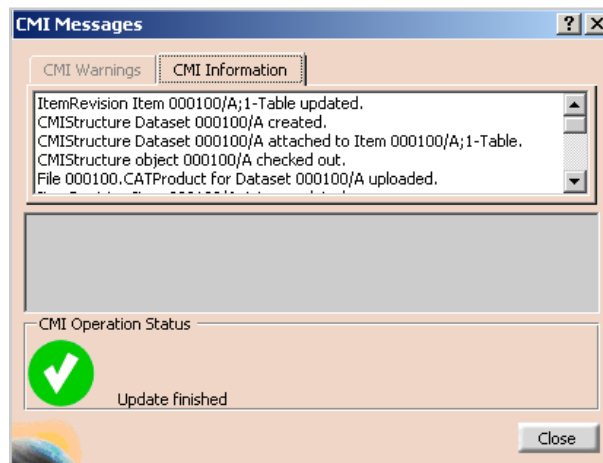


Figure 41: Dialog Window for Update Teamcenter

CMI toolbar: Synchronization in Teamcenter




This command updates Teamcenter with any changes made to your CATIA V5 product structure. The changes that will be reflected in Teamcenter include:

- any geometry and position information changes,
- the creation of any new CATParts/cgrs/models and CATProducts that have been added to your product structure,
- the creation of any new CATPart/cgr/model and CATProduct instances,
- the removal of CATProducts and CATPart/cgr/model instances from the product structure.

The changes made to the product structure since the last Read/Update/Synchronize are presented in the form of a list of operations to be performed in Teamcenter.



Modify your product structure in CATIA by adding a new CATPart/cgr, adding a new CATProduct, removing a product or by changing the geometry of a CATPart.

Write the modifications back to Teamcenter with the *Synchronization in Teamcenter* icon .

The following dialog will appear, showing which changes need to be written to Teamcenter:

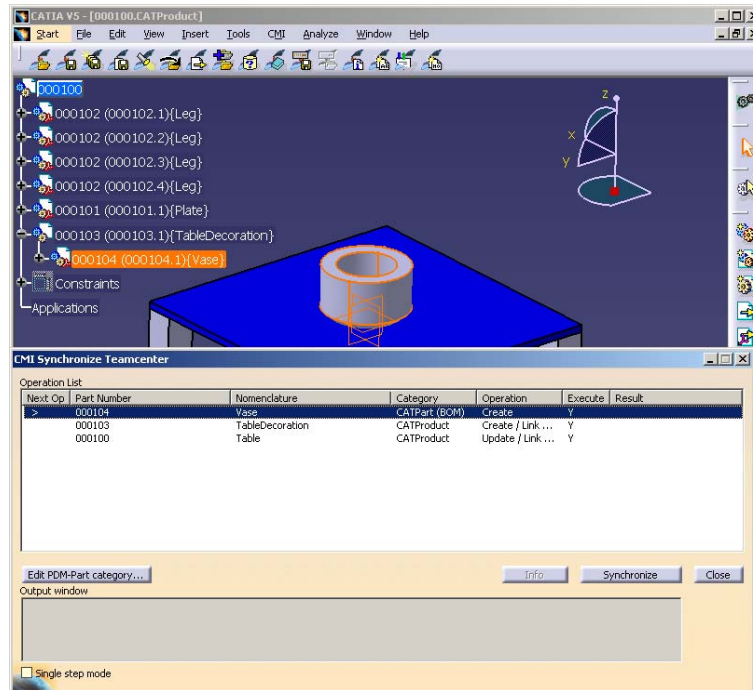


Figure 42: The Synchronize Teamcenter dialog

The dialog's *Operation* column shows which procedures need to be performed in Teamcenter for each object and may be a combination of the following:

Update	The file and positional changes of any children will be updated in Teamcenter.
Create	The object will be created in Teamcenter. The object is completely new and not already in Teamcenter.
Link Child	At least one new parent-child relation will be created in Teamcenter. This reflects the addition of a child product in CATIA.
Drop Child	At least one parent-child relation will be deleted in Teamcenter. This reflects the deletion of a child product of the object in CATIA.

The column *Execute* shows whether the operation will be executed or not. If there is any reason why the operation cannot be executed, then the reasons will be shown in the *Result* column.



If new geometry files are to be created in Teamcenter the default is *BOM Type*. This will become an item and a dataset in Teamcenter.

With the *Edit PDM-Part category* button the category can be changed to *No BOM Type* in the *Edit new PDM-Part category* dialog (see Figure 43). This file will become a dataset in Teamcenter and will be attached to the parent item.

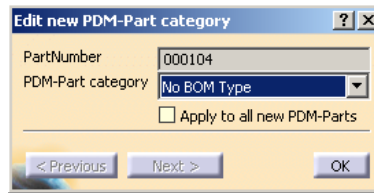


Figure 43: Edit new PDM-Part category dialog



If the *Synchronize* button is pressed, the list of executable operations is worked through in the order shown on the screen.

The results from Teamcenter are shown in the Output Window below the list.



The *Update* operation:

CATIA File objects will be updated in Teamcenter. No user interaction is necessary.



The *Create* operation:

CATIA File objects will be created in Teamcenter and the following steps will be completed:

- A Teamcenter item will be created.
The created item is also linked to the user's Newstuff Folder.
- A dataset will be created under the item.
- The file will be imported in the dataset as Named Reference with the correct type (CMI3DGeo or CMIStructure).



The *Link Child* operation:

- This may only appear as an operation for *CATProduct* objects, as *CATParts* cannot contain sub-products. In Teamcenter any new children will be added to the Teamcenter item of the parent object by creating a new BOM Line.



The *Drop Child* operation:

- This may only appear as an operation for *CATProduct* objects as *CATParts* cannot contain sub-products. In Teamcenter any child *CATProducts* deleted from the *CATIA* product structure will be detached from the Teamcenter item of the parent object by removing the BOM Line.



After every operation the success or failure will be registered in the *result* column of the dialog. If an operation fails the output window will provide you with the cause of the failure.

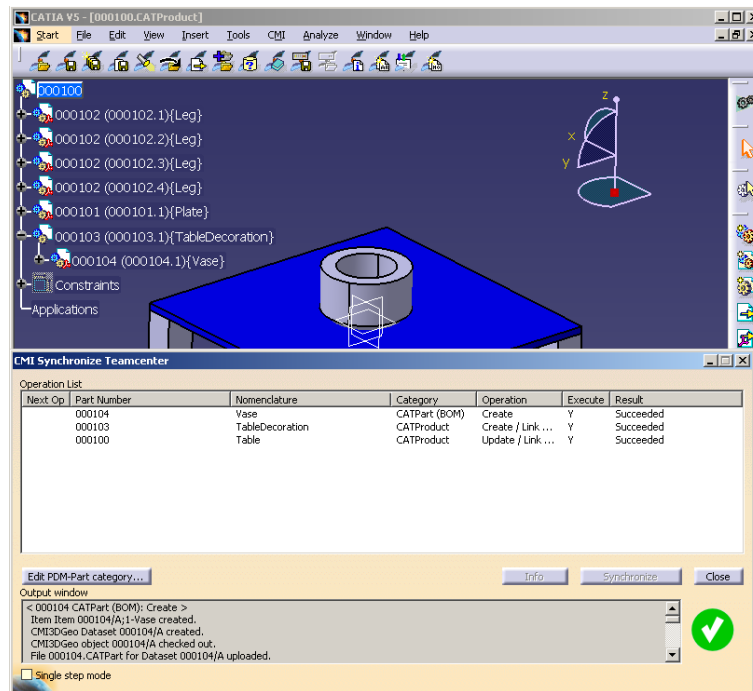


Figure 44: The Synchronization in Teamcenter dialog with success

CMI toolbar: SaveAs in Teamcenter



With this command a CATPart or CATDrawing currently set active in CATIA V5 can replace another file in Teamcenter. A CATPart or CATDrawing selected in Teamcenter and then dropped into CMI RII will be overwritten by the contents of the CATPart or CATDrawing in CATIA memory.



Design or load your CATPart or CATDrawing in a separate window in CATIA.



In CATIA V5 select the *Save As in Teamcenter* icon .

Drag and drop or Send an item into the CMI RII application in Teamcenter.

In order to *Save As in Teamcenter* with a CATDrawing, drag the 'new' CATDrawing dataset to be overwritten into the CMI RII application in Teamcenter. The CATDrawing active in CATIA V5 will then overwrite its content.

In order to *Save As in Teamcenter* with a CATPart, drag the 'new' item to be overwritten into the CMIRII application in Teamcenter. The CATPart active in CATIA V5 will then overwrite its content.



Please take care when you 'Save As' a CATPart which is used in a CATProduct - a reference to the CATPart is stored within the parent CATProduct. Make sure that the new CATPart is compatible.


CMI toolbar: Highlight in Workbench



If you want to highlight CATParts, CATProducts, and CATIA V4 models in the CMI RII application triggered by CATIA V5 perform the following steps.



In CATIA V5 select the CATIA objects you want to highlight in the CMI RII

application and choose the *Highlight in Workbench* icon  from the CATIA CMI toolbar.



Now the items are selected in the CMI RII application.

CMI toolbar: Get original geometry from Teamcenter



The *Get original geometry from Teamcenter* command retrieves geometry files (CATPart or CATIA V4 model) from Teamcenter if the geometry files are not yet loaded in CATIA V5.



A CATProduct, CATPart or CATIA V4 Model has to be selected in the product structure.



The function is used in context of huge product structures in CATIA to get the original geometry file from Teamcenter if the *Do not activate default shapes on open* option is set in the CATIA *Product Visualization* settings (see Figure 45).

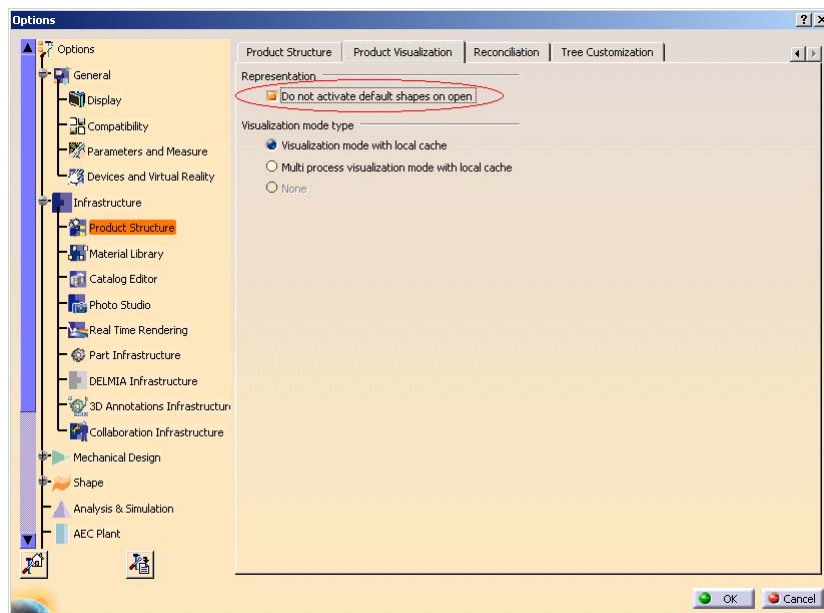


Figure 45: *Do not activate default shapes on open* option in CATIA V5

CMI toolbar: Add Temp



The *AddTemp* command allows the user to visualize a temporary structure together with the working one.

For example, if the user is making a design of a car and wants to see if the luggage boot is big enough, he can load a suitcase as a temporary structure by doing the following (supposing that the car structure is already loaded):



In CATIA V5, go to *Tools*→*Options*→*Compatibility* (Tab: “CMI”) and make sure that the option “Use one temporary product window...” is checked.



Read an assembly (here the car assembly) into CATIA using the *Read* command in CMI toolbar.



In CATIA V5 select the *AddTemp from Teamcenter* icon



Drop the assembly or model you want to add temporarily to CATIA (the suitcase) into the CMI RII application. Expand it as necessary. Click *Tools*→*Temp To CATIA* in the menu or press the *Temp to CATIA* icon in the CMI RII toolbar. Changes or expands you make to other assembly structures in the CMI RII application will not be sent to CATIA.



CATIA comes to the foreground with both the original and temporarily added structures loaded in the same window – here the car and the suitcase structure.

It will not be possible to make any changes to the temporarily added (suitcase) structure.

The temporarily added part/structure is removed from the CMI RII application after you sent it to CATIA.



All Part Numbers and File Names in the temporarily added structure are prefixed with “TMP#_”, where “#” is a counter in CATIA V5, beginning with 1. Every *AddTemp* will increase the counter. This prefix is customizable by the customer.



Limitation:

CATProducts are not transferred to CATIA, the products will be represented by “CATIA Components”. Only position information from Teamcenter is processed.

Visualize multiple revisions of an Assembly using Add Temp

Add Temp in CATIA V5 can be used to load different versions (revisions) of an assembly or model at the same time. In order to make this possible, the Part Numbers and File Names of the temporarily added assembly are prefixed with “TMP#_”.



In CATIA V5, go to *Tools*→*Options*→*Compatibility* (Tab: “CMI”) and make sure that the option “Use one temporary product window...” is checked.



Read revision B of your assembly as described in *CMI toolbar: Read From Workbench*.

You will find that it is opened in CATIA underneath a product tagged “CMI Workbench”.



In CATIA V5 select the *Add Temp from Teamcenter* icon



Find and expand Revision A of your assembly (drop it in the CMI RII application window and use the *Expand Below* command in Teamcenter). Click *Tools*→*Temp To CATIA* in the menu or press the *Temp to CATIA* icon in the CMI RII toolbar. Changes or expands you make to other assembly structures in the Workbench will not be sent to CATIA.



Revision A and B of your assembly are opened in the same Window in CATIA V5. You can overlay and position the assemblies relative to each other for comparison.

CMI toolbar: Insert from Teamcenter



The *Insert from Teamcenter* command allows the user to load a CMI structure under a selected product.




Read an assembly into CATIA V5 using the *Read from Workbench* command in CMI toolbar.

Select a product to be the root of the inserted structure.

In CATIA V5 select the *Insert from Teamcenter* icon .



Drop the assembly structure you want to use in CATIA V5 in the CMI RII application window. Expand it as necessary. Click *Tools* → *Insert To CATIA* in the menu or press the *Insert To CATIA* icon  in the CMI RII toolbar. Changes or expands you make to other assembly structures in the Workbench will not be sent to CATIA.



CATIA comes to the foreground with the selected product and the used structure.

The dropped part/structure is removed from the CMI RII application window after you sent it to CATIA.

Via Synchronize you can save the new Use-Relation in Teamcenter.

CMI toolbar: Local Save and Restore



Using *Save Local* the content of the CATIA V5 session can be stored locally.

This snapshot of the session will persist even when CATIA V5 is closed.



When the session is restored with *Restore Local*, you can continue your work as if you had just used *Read from Teamcenter*, i.e. you can perform Updates.

The *Restore Local* command is only available when the CATIA is empty – i.e. no documents are open – to avoid conflicts.



With *Save/Restore Local* you can avoid reading large assemblies from Teamcenter repeatedly. However, the status of the data in Teamcenter may change if you keep your local snapshot for a long time. It may get “stale”.

The following restrictions apply:

- Only one saved session is maintained at a time.
- The session can only be saved when the data is up to date. I.e. there are no files in a modified state, and no new files.

- The *save/restore local* does not restore files that were not loaded from the PDM system.

CMI toolbar: Reconnect with Teamcenter



CMI recognizes files that have been loaded into CATIA V5 through the CMI RII application window. Since it knows that they are from Teamcenter, it can update them there.

Other files, which you load with e.g. *File* → *Open*, it will not know. They will be regarded by *Synchronize* as new files, and it will create new Teamcenter objects for them.

If you open a product structure from disk that contains files that are already in Teamcenter, you can use *Reconnect with Teamcenter* to make CMI RII recognize these files. It will recognize products if the part number is correct, and CATPart/model files based upon their filename. If the CATPart is a BOM CATPart (Component) in Teamcenter, the part number must also match.

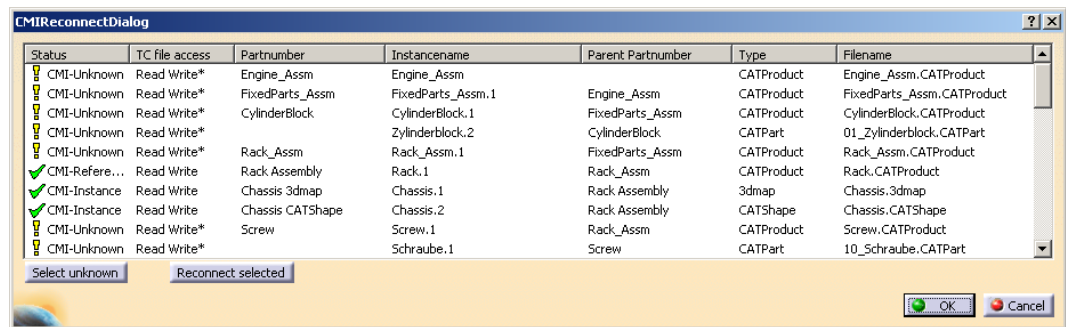


Figure 46: Reconnect dialog

There are three possible states:

CMI-Unknown	CMI does not know this item at all. It would be created as a new part in Teamcenter.
CMI-Reference	CMI knows this item is in Teamcenter. But it appears that in Teamcenter there is no instance known by the same instance name under the same parent item. Maybe it was deleted or is new. It would be created as a new part instance in Teamcenter.
CMI-Instance	CMI knows this instance is in Teamcenter. It can be updated in Teamcenter.

An asterisk (*) signifies that the Reconnect Dialog recognized the item, but it is not yet reconnected. Items are actually reconnected when you close the dialog with *OK*. Click *Cancel* to keep them as unknown, e.g. if you want to save them as new Teamcenter objects.



Reconnect does not create anything in Teamcenter or updates any files. Use *Synchronize* to update data.



Load a CATProduct into CATIA V5 using *File* → *Open*.

In CATIA V5 select the *Reconnect with Teamcenter* icon .



In the CMI Reconnect Dialog, click *Select unknown*. In this case, all lines will be selected. Click *Reconnect selected*. If any items are recognized in Teamcenter, they will change their status. To reconnect these items, close the dialog with *OK*. Click *Cancel* to leave the dialog without reconnecting the items.



Reconnected items that are writeable in Teamcenter will be in the “modified” state, to be able to update them in Teamcenter.

Use *Synchronize* to create the unknown/new data and to update the reconnected files.



If you want to keep individual items as new, unselect them before you click *Reconnect selected*.

CMI toolbar: CMI Manage Catalogs



This command is described in section *Manage Catalogs* on page 41.

CMI toolbar: CMI Info



This command displays the information from Teamcenter for CATParts, CGRs, CATProducts, CATDrawings and CATIA V4 Models.

The *More ...* button displays attributes of the correspondent Teamcenter objects. The range of attributes can be customized.

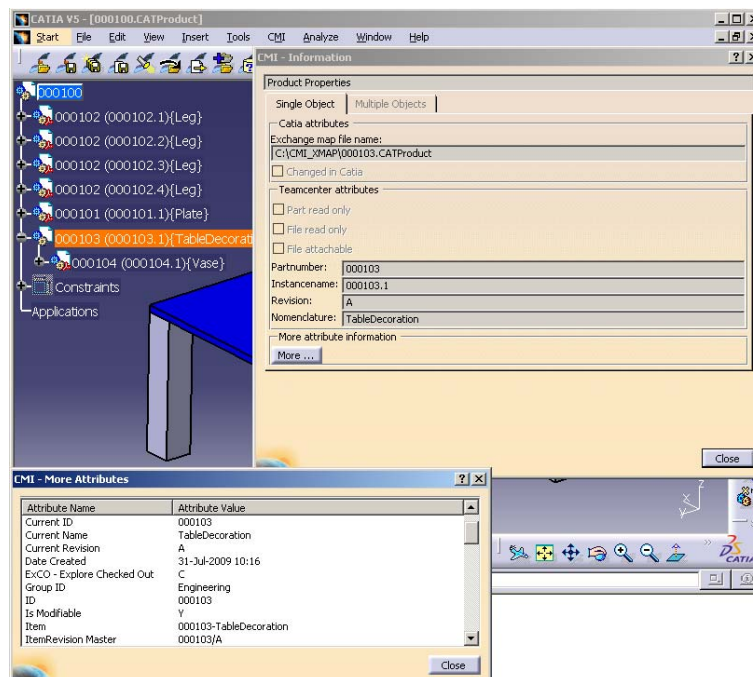


Figure 47: Information dialog window for CATProduct with “More Attributes”



Select the CATPart, CATProduct, CATDrawing or CATIA V4 Model.



In CATIA V5 select the *CMI Info* icon. The appropriate dialog info window appears.



You can also select multiple CATIA items. Information will be displayed in a table view.

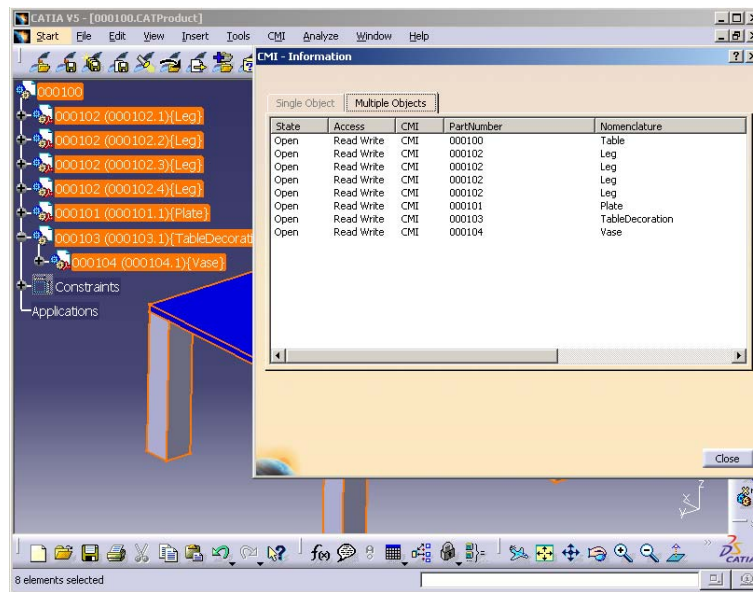


Figure 48: CMI Information for multiple items

Handling of CATDrawings

CATDrawings can be included in your assembly structures in Teamcenter. All the usual functions (Read, Update, Create and Save As) are supported for CATDrawings in CATIA V5 via the CMI toolbar.


CATDrawings may be created for single models or for assemblies. There are however several caveats when working with CATDrawings and CMI, depending on the context of the CATDrawing.

Creating a CATDrawing from a Single Model

When creating a CATDrawing for a CATPart, send the CATPart item from Teamcenter to CATIA V5, and then create the CATDrawing. This method will preserve the context of the CATDrawing - irrespective of whether the CATPart is later loaded into CATIA singly or as part of an assembly. If you later make changes to the CATPart, and you wish the CATDrawing to update and reflect the changes, you must load both the CATPart and the CATDrawing in CATIA V5 using CMI before you update the CATDrawing.




Drag and drop the CATPart item on the CMI RII application or use *SendTo→CMI RII* with the CATPart Item.

Select *Tools→Send To CATIA* or use the *Send To CATIA* icon  in the CMI RII toolbar.




Create the CATDrawing with the usual CATIA V5 functions.

Select the *Synchronize in Teamcenter* icon .

Creating a CATDrawing from a Product Structure




Drag and drop the assembly into the CMI RII application.

Select *Tools* → *Send To CATIA* or use the *Send To CATIA* icon  in the CMI RII toolbar.



Create the CATDrawing with the usual CATIA V5 functions.

Select the *Synchronize in Teamcenter* icon .

Automatic Update of CATDrawing title block parameter



CMI RII can automatically update text fields in the Drawing title blocks with attributes from Teamcenter. This requires a configuration in Teamcenter.



Use *Edit* → *Options* to open the Teamcenter preferences dialog.

Switch to the index tab and check the following Preferences:

- **CMI2DGeoParameterAttributesTC**
- **CMI2DGeoParameterAttributesCATIA**

(see Figure 49).

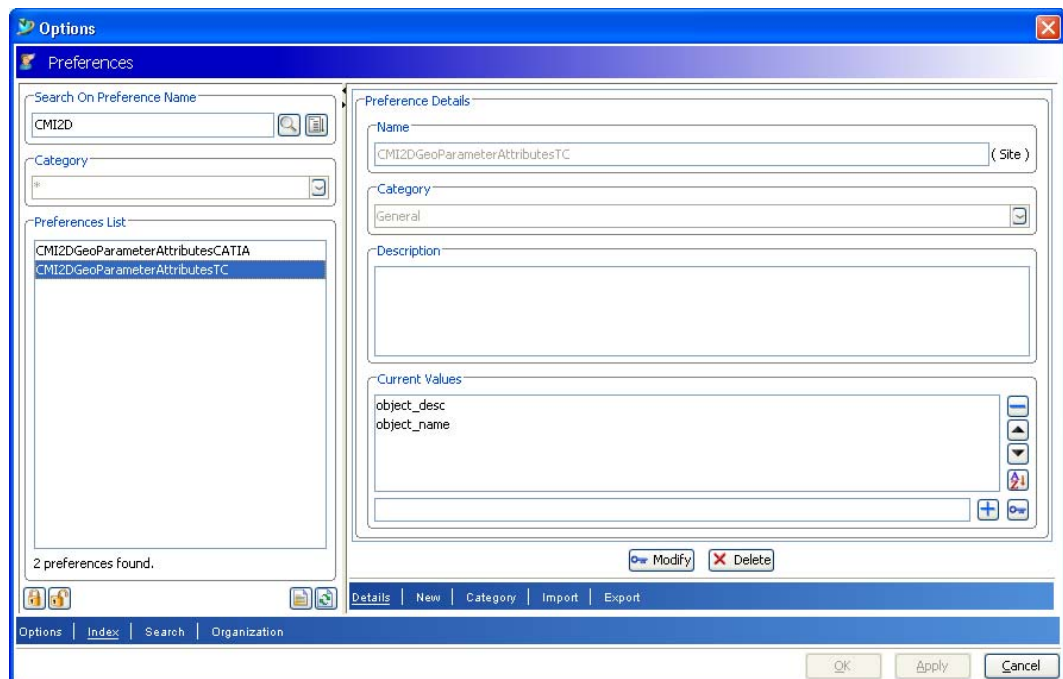


Figure 49: Options Dialog in Teamcenter



CMI2DGeoParameterAttributesTC defines a list of Teamcenter attribute names of the dataset object in Teamcenter.

Example:

object_desc
object_name

CMI2DGeoParameterAttributesCATIA defines the parameter names in CATIA.

Example:

PdmDescription
PdmNumber

These two lists must have the same length.



In CATIA the Knowledgeware Parameters can be defined in the CATDrawing object.

With the *Attribute Link* command in CATIA these parameters can be connected to text fields in the CATDrawing.

CMI RII will update the Knowledgeware Parameters in the CATDrawing document.

With the example values above the `object_desc` attribute of the CMI2DGeo dataset is read in Teamcenter and set in the PdmDescription parameter in CATIA (see Figure 50) and the `object_name` attribute of the CMI2DGeo dataset is read in Teamcenter and set in the PdmNumber parameter in CATIA.

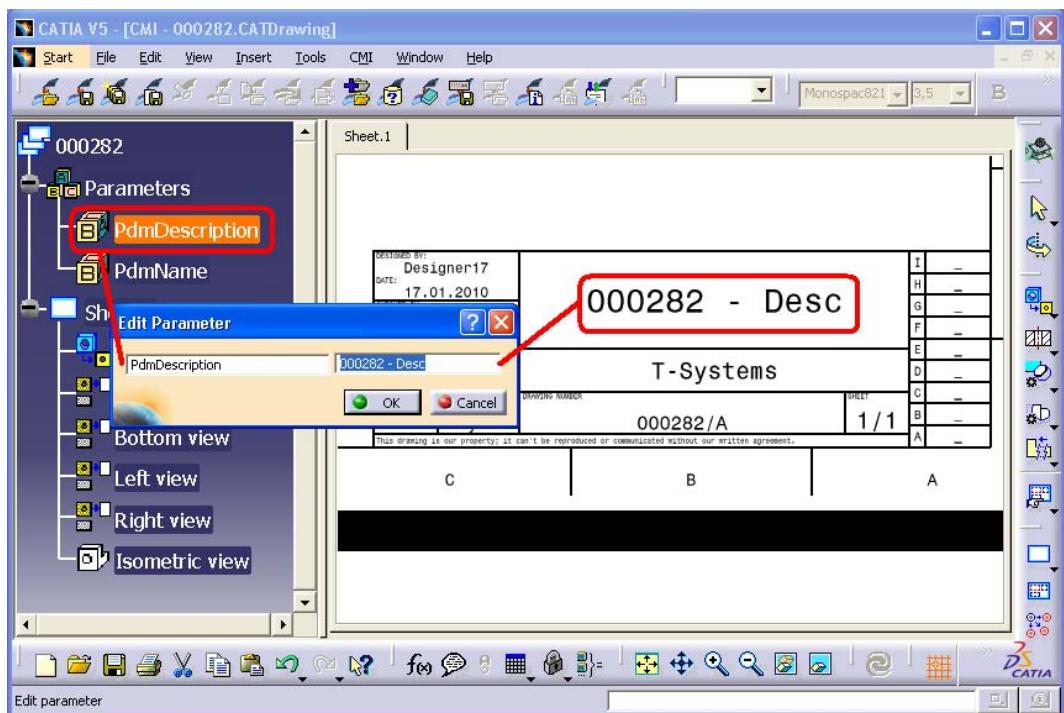


Figure 50: CATDrawing Parameter in CATIA V5

With the *CMIRead* command the parameters are updated in the CATDrawing document in CATIA.

Handling of cgr and model files

CATIA V5 cgr files and CATIA V4 Model files are managed as representation of an embedded component in the product structure. It is not possible to modify such a representation directly. It is only possible to use the *Save As* function of CATIA V5 to create a new cgr or model file of a loaded CATPart or CATProduct. To update the representation you have to replace the original representation by the new representation.



Load an assembly which uses a cgr or model in the product structure. And use the right click *Representations* → *Manage Representations ...* command (Figure 51).

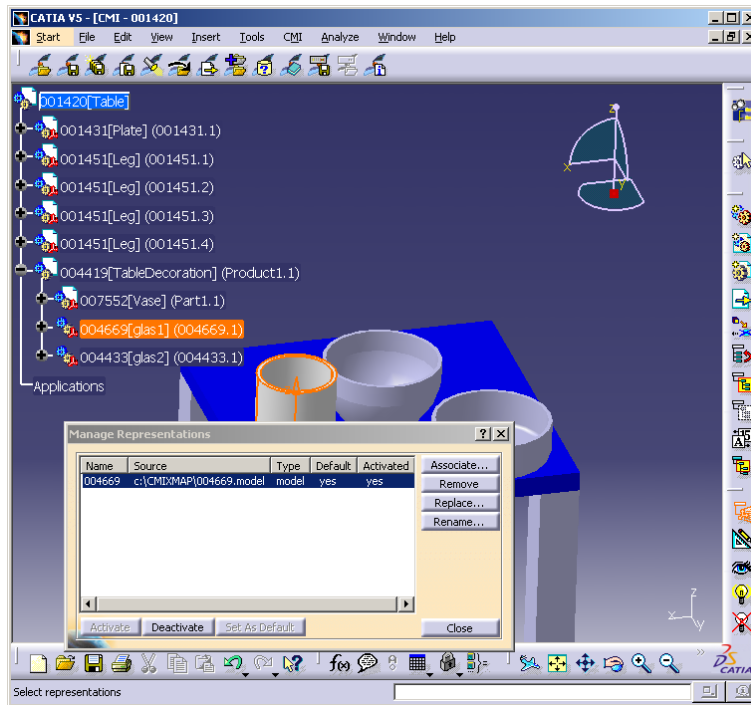


Figure 51: Manage Representation dialog of CATIA V5



Use the “Replace” function to use the cgr or model file with a new representation.

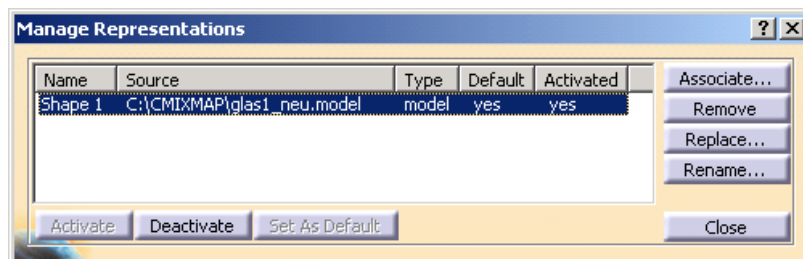


Figure 52: Manage Representation dialog of CATIA V5 with new model file



Use the CMI *Update* or *Synchronize* functionality to update the new cgr or model file in Teamcenter.



During the CMI *Update/Synchronize* process CMI replaces the original representation file in the exchange directory by the new representation file and changes the “Source” path of the representation back to its original value. Then the

new representation file (which has the name of the old file) is updated in Teamcenter.

To use this function you need write access to the cgr or model data item in Teamcenter. Although the cgr or model is represented in an embedded component of a higher CATProduct you need no write access to the CATProduct.



Restrictions:

- There must be only one representation in one component.
- The "Name" of the representation must not change.

Catalog Management

CMI can also manage catalog files in Teamcenter. Teamcenter compatible catalogs reference files and items that are actually stored in Teamcenter. If the user opens or inserts a file from the catalog, CMI retrieves the corresponding data from Teamcenter and starts the defined catalog function (see section *Update or Create Catalog* for function details) with the retrieved file(s).

Manage Catalogs



The *Manage Catalogs* icon is enabled when you have a CATProduct active. It allows retrieving catalogs from Teamcenter for browsing.



After starting the *Manage Catalogs* command the *Select Catalog* dialog will be opened in CATIA.

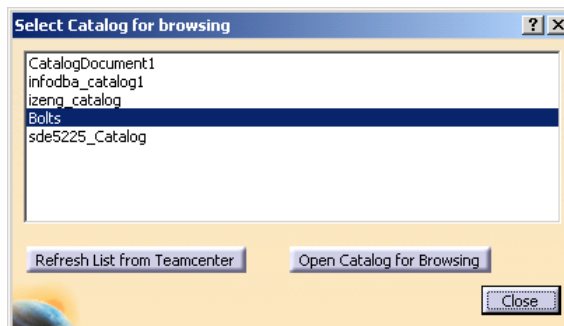


Figure 53: Select catalog for browsing dialog



Pick from the list of catalogs available in Teamcenter and select the *Open Catalog for Browsing* button. The catalog will be opened in a CATIA Catalog browser.

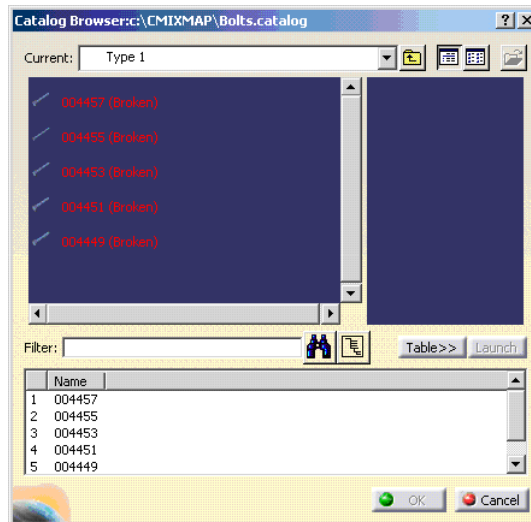


Figure 54: Bolt Catalog opened in CATIA



Double click an end chapter to open the item from Teamcenter. CMI RII will load the required files from Teamcenter if needed.



You cannot use *Open Document* or *Open As New Document* in this context.

Read Catalog



The administrator needs to set `CMI_ENABLE_CMICATALOGREADCMD=ON` in the CATIA environment in order to enable the *Read Catalog* function.

The *Read Catalog* icon is enabled when you have a CATProduct active. It allows you to retrieve catalogs from Teamcenter for editing.



After starting the *Read Catalog* command the *Select Catalog* dialog will be opened in CATIA. *Read Catalog* allows to retrieve CATCatalogs from Teamcenter for editing.



Only catalogs with write access in Teamcenter will be retrieved from Teamcenter.

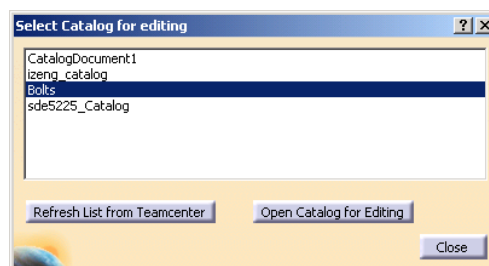


Figure 55: Select Catalog for editing dialog



Pick from the list of catalogs available in Teamcenter and select the *Open Catalog for Editing* button. The catalog document will be opened in a CATIA catalog editor.

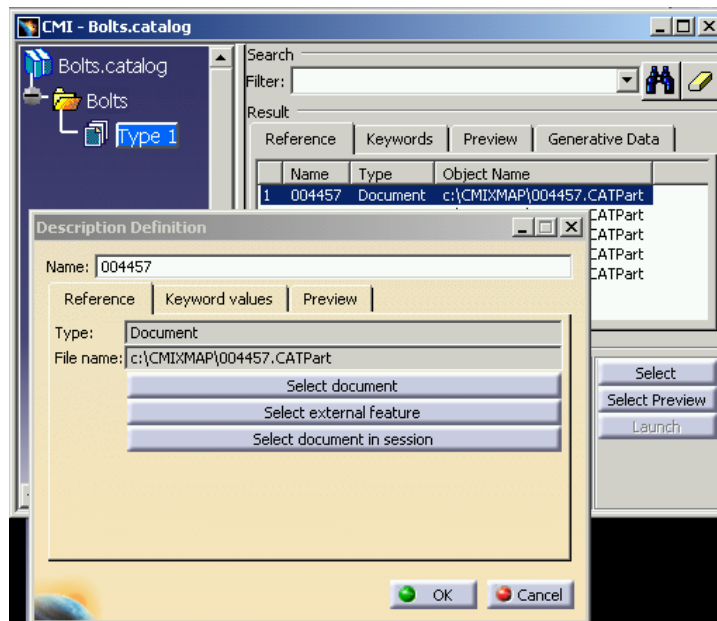


Figure 56: Edit catalog in CATIA



Use the *Select document in session* button to build the catalog from parts or files that were opened from Teamcenter via CMI.

Update or Create Catalog



The administrator needs to set `CMI_ENABLE_CMICATALOGUPDCRECMD=ON` in the CATIA environment in order to enable the *Update or Create Catalog* function. The *Update or Create Catalog* icon is enabled when you have a catalog active.



Update or Create Catalog allows saving new or updated catalogs in Teamcenter. It will manage the necessary keyword attributes so that the items contained in the catalog can be retrieved from the Teamcenter database instead of the local file system.



After starting the *Update or Create Catalog* command the catalog document is analyzed and the following dialog is shown.

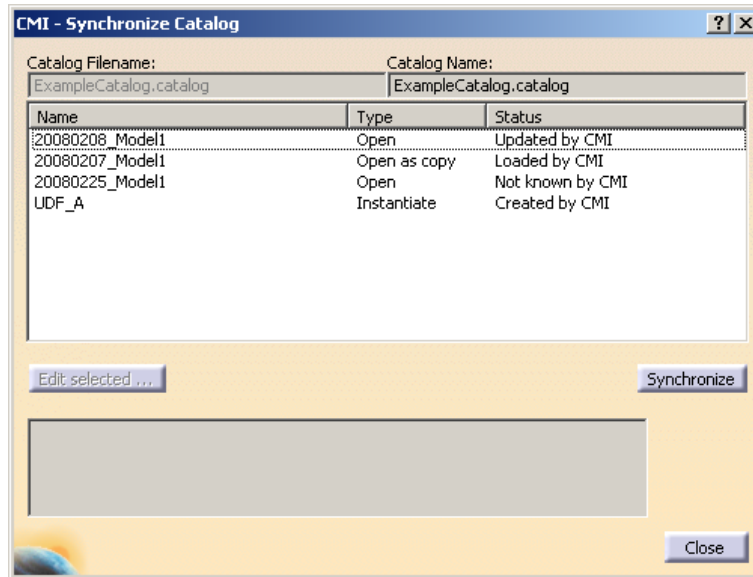


Figure 57: Synchronize Catalog dialog



For new catalogs that were not already opened from Teamcenter, the user can change the file name which should be used in Teamcenter.



The type can be **Open**, **Open as copy**, and **Instantiate**. These types describe the way in which the items will be handled when the catalog is used with the *Manage Catalogs* command.

Open	Open the referenced object in CATIA so that the existing Teamcenter item is used (e.g. standard part).
Open as copy	Open the referenced object in CATIA so that it will be recognized as a new item in Teamcenter (e.g. templates).
Instantiate	Instantiate is used for Features and Power copies which will be instantiated in the active document.

The Status Field can be **Loaded by CMI**, **Updated by CMI**, **Not known by CMI**, and **Created by CMI**.

Loaded by CMI	The item is from Teamcenter and already was in the catalog at load time.
Updated by CMI	The item is from Teamcenter but the type was changed.
Not Known by CMI	The item is not from Teamcenter.
Created by CMI	The referenced file was opened from Teamcenter and is new in the catalog.



After pressing the *Synchronize* icon CMI will check all entries and if there are unknown entries, the user must confirm, that he will continue.

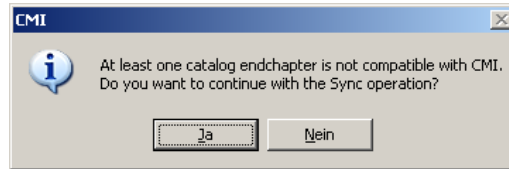


Figure 58: Confirmation dialog for unknown entries in the synchronize catalog command



This indicates that there is an item referenced in the catalog that is not managed by Teamcenter.



Next the catalog is registered or updated in Teamcenter. Figure 59 is shown when the *Synchronize* command ends successfully.

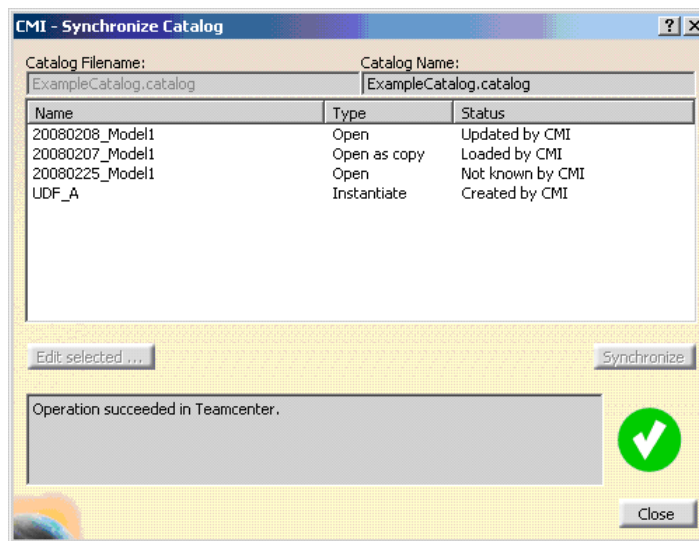


Figure 59: Synchronize Catalog with success

Handling of CMI Archives

CMI supports the use of CMI Archives. A CMI Archive is a dataset in Teamcenter which contains a CATIA V5 structure. The structure has one root item which can be a CATProduct or a CATPart. If the root item is a CATProduct, it can contain more items of type CATIA V5 Component, CATIA V5 CATProduct or CATIA V5 CATPart.

In the following sections the handling of CMI Archives is described in detail.



First open the CMI RII application in Teamcenter and open an Item in the CMI RII application (see Figure 60). After sending the CMI RII application content to CATIA V5 (*Tools*→*Send To CATIA* in Teamcenter or the *Read Command* in CATIA V5), the product structure is loaded in the CATIA V5 application.

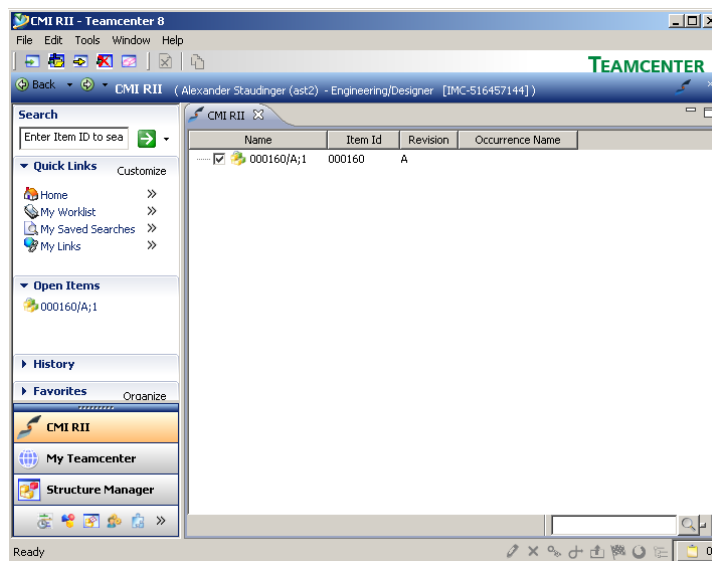


Figure 60: Item 000160 in the CMI RII application window

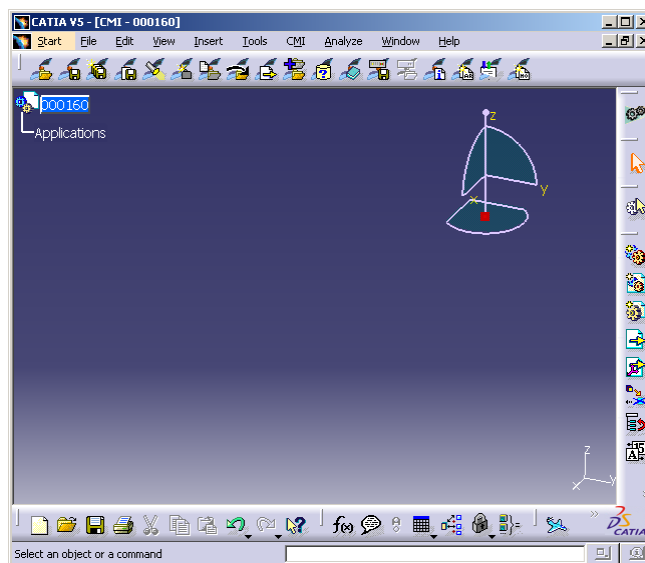


Figure 61: Loaded item 000160 in CATIA V5

Figure 61 shows the loaded product in CATIA V5. Now we add the structure which should be attached as CMI Archive as child items to the item 000160. In our example the three possible types are added under the root item (see Figure 62).

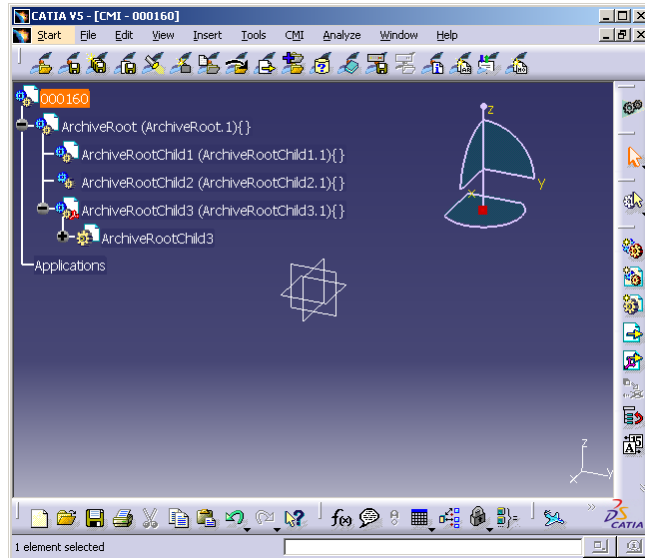


Figure 62: CMI Archive root product with three children



Select the root product which should be attached as CMI Archive (see “ArchiveRoot (ArchiveRoot.1)” in Figure 62). The parent object of the selected item must be loaded from CMI. The CMI Archive will be attached to an existing CMI structure by using the *Attach Archive* CMI toolbar button.

In CATIA V5 select the *Attach Archive* icon.



In the Teamcenter client the create dialog for the new dataset (see Figure 63) will appear.

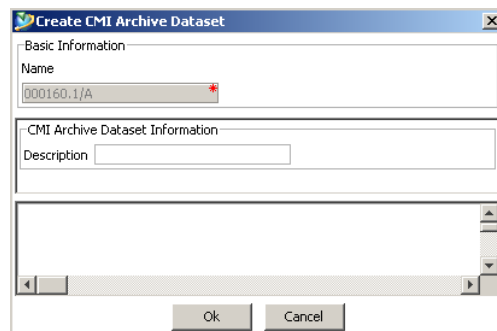


Figure 63: Create CMI Archive Dataset dialog



After creating all objects and relations in Teamcenter the user will be asked to update the parent product in Teamcenter (see Figure 64).

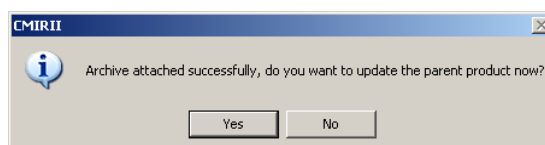


Figure 64: Update parent product message box



After the update the user gets the information from Teamcenter in a message window within CATIA V5 (see Figure 65).

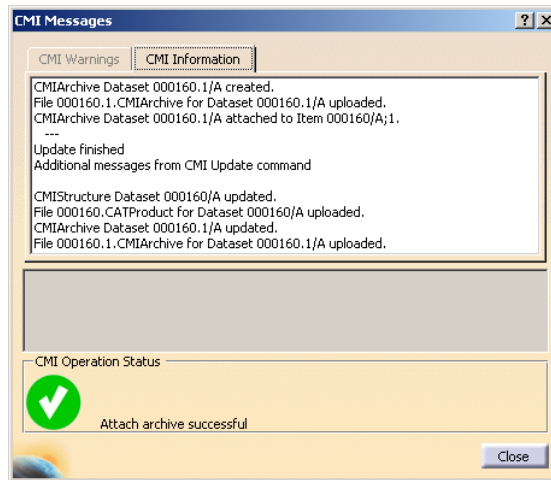


Figure 65: CMI Messages window



CMI RII has created a new CMI Archive dataset in Teamcenter. The dataset is linked with the item 000160. Figure 66 shows the expanded CMI Archive dataset in the My Teamcenter application.

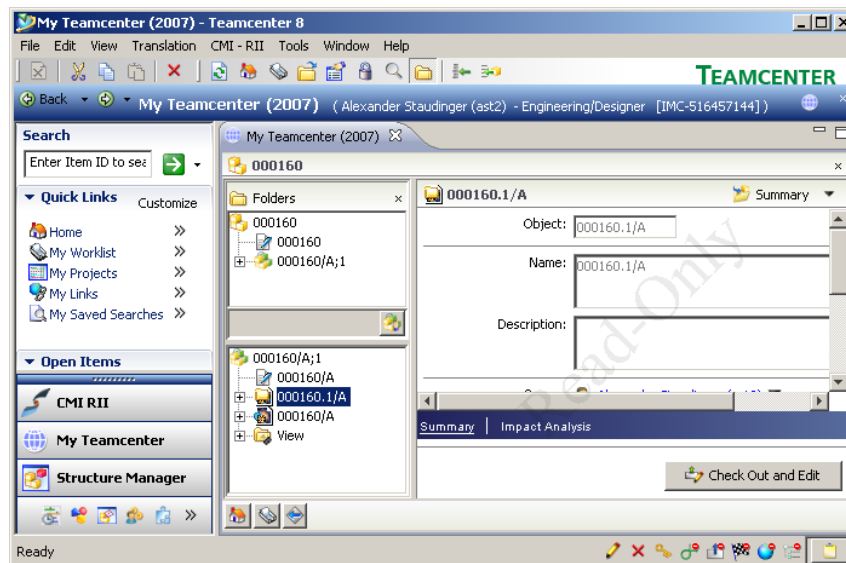


Figure 66: CMI Archive item in Teamcenter



In CATIA V5 the Teamcenter data is attached for the CMI Archive. The CMI info dialog (see Figure 67) shows the information for the CMI Archive object in CATIA V5.

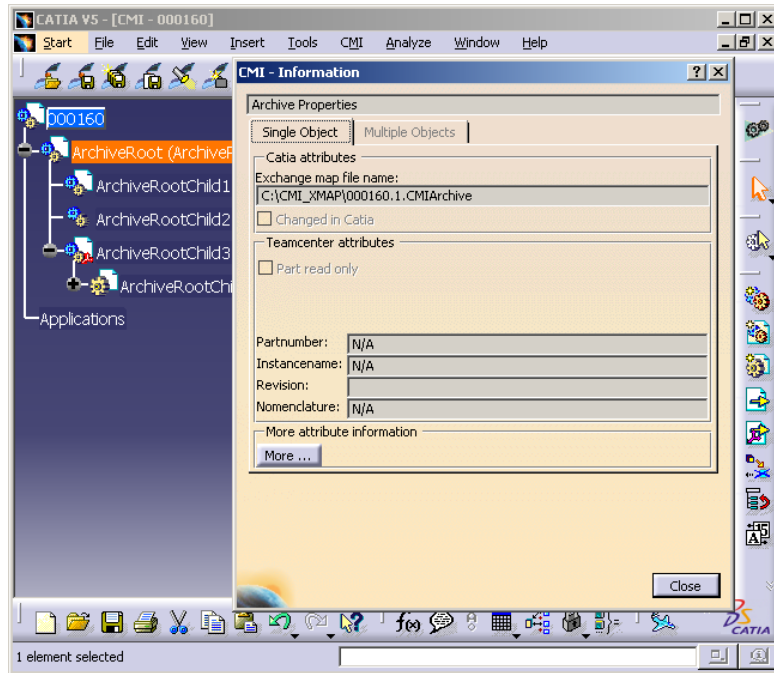


Figure 67: CMI Archive Information




The CMI Archive can be modified or extended, e.g. by adding new CATParts, CATProducts, etc. A changed CMI Archive can be updated in Teamcenter with the standard CMI *Update* commands.

It is possible to add some non CATIA files to the CMI Archive. By default these files have to be located in the CMI exchange directory.



It is possible to select a special directory from where you can select non CATIA files. Therefore use the CATIA → Tools → Options functionality. In General→Compatibility→CMI please select “Use extra directory for non CATIA items in CMI-Archive” and set a directory.
Note: you have to restart CATIA after changing this setting.



To manage non CATIA file in the archive you have to select any member of the archive and press the *Modify non CATIA archive content* icon . You will get the dialog shown in Figure 68.

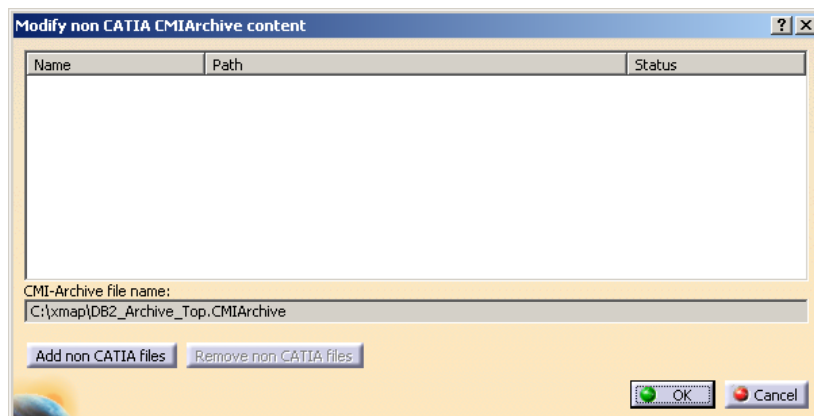


Figure 68: Modify non CATIA CMI Archive content



To add some files press the “Add non CATIA files” button of the dialog. A second dialog appears. This dialog shows all files of the CMI exchange directory except the loaded CMI product structure files and other CATIA files. To show non CMI CATIA files you can deselect the filter checkbox.

Select the files you want to add to the Archive and press OK. The selected files are added to the CMI archive. During CMI Update the files are packed to the archive file. During read the files are extracted from the archive.



It is also possible to select a file in the dialog and to remove it from the archive by pressing “Remove non CATIA files”. During CMI Update the files are removed from the archive file.

Handling of CATAnalysis

The CATIA V5 data type CATAnalysis can be stored in a CMI Archive (see Handling of CMI Archives).



Read an existing product structure document (see Figure 69) to CATIA V5 (see Figure 70).

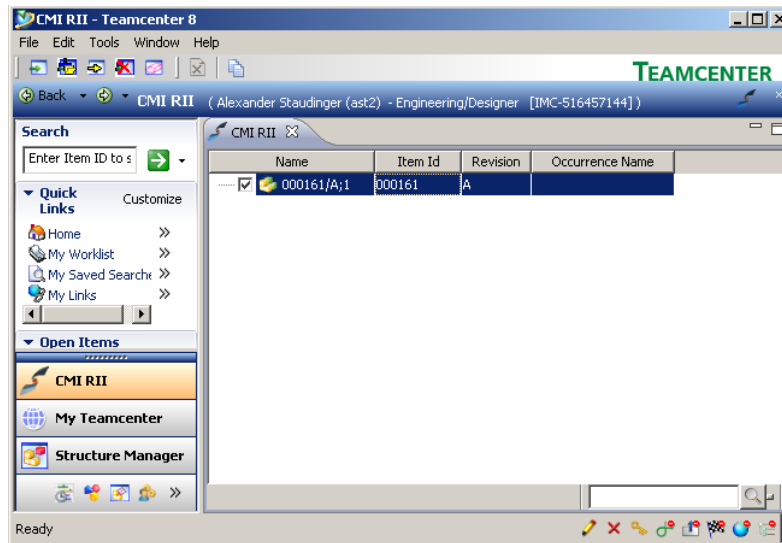


Figure 69: Existing item in Teamcenter

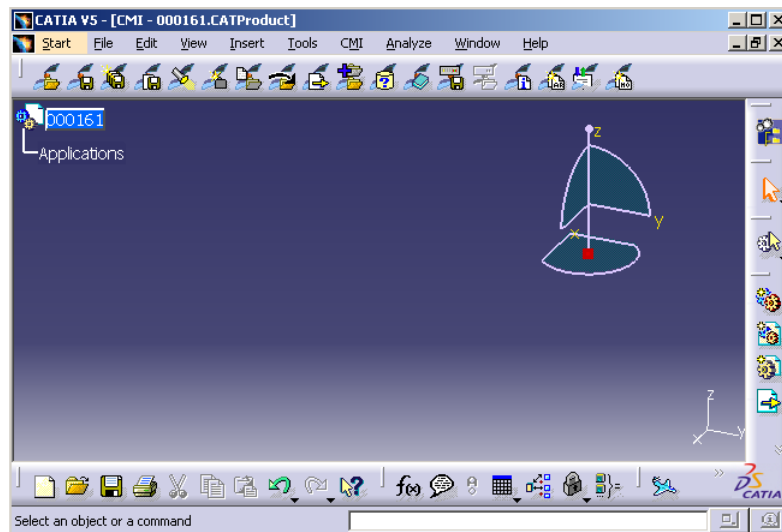


Figure 70: Item loaded by CMI



Attach an existing CATAnalysis file with the CATIA V5 functionality *Add existing component* (see Figure 71).

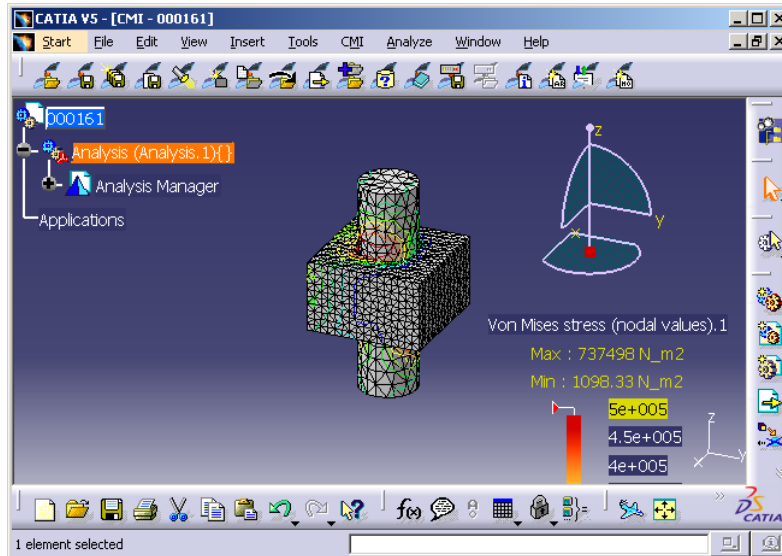


Figure 71: CMI Product with existing CATAnalysis



Select the Analysis in the product structure and use the *Attach Archive* function (see Handling of CMI Archives).



The result is a new CMI Archive with the CATAnalysis file, CATProducts, CATParts, and the optional CATAnalysisResults file, which is attached to the existing Item. Figure 72 shows the item with the new CMI Archive attached.

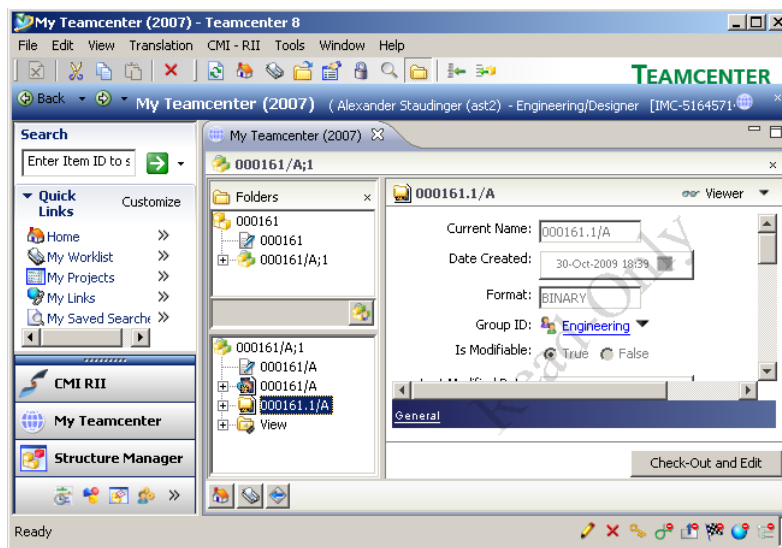


Figure 72: CATIA Workbench after Expand model on Part Number



The newly created CMI Archive can be opened with the CMI RII application (see Figure 73) and loaded to CATIA with the *Read* command.

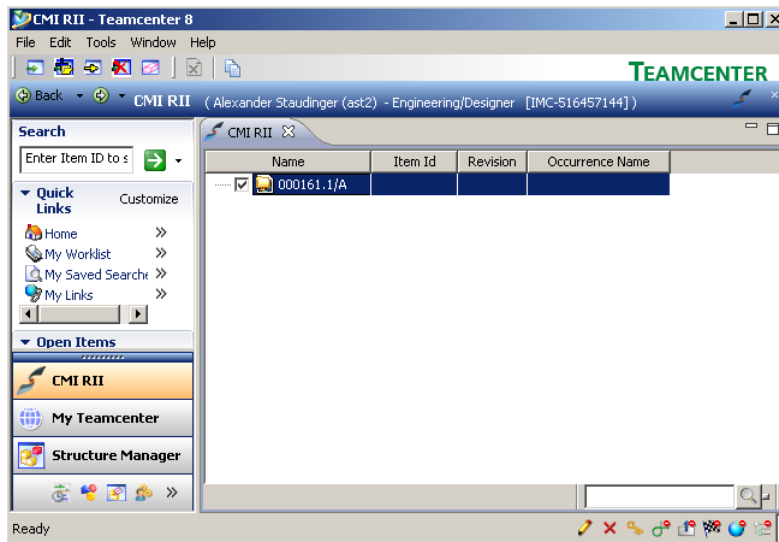


Figure 73: CMI RII application with CMI Archive



The result is the CATAnalysis document in CATIA V5 (see Figure 74).

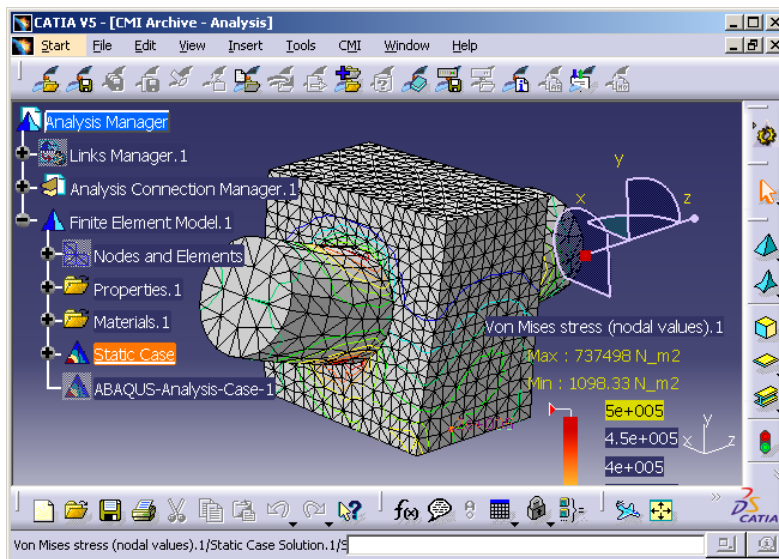



Figure 74: Existing CMI Archive with CATAnalysis loaded by CMI



Changes made by the user can be updated with the standard CMI *Update* commands.

Handling of Design Tables

CATIA V5 Design Tables  can be stored in Teamcenter. Both CSV and Excel™ files are supported. The Design Table dataset is linked to the Item Revision and to the CATPart. Design tables referenced by CATParts and CATProducts are supported.

Design tables are not stored by default because of performance considerations; also, you need a sound methodology if you allow the use of design tables in your methodology, since design tables have the power to change your product structures.



The Teamcenter administrator needs to set `CMIWorkWithDesignTables` to 1 in the Teamcenter preferences in order to enable the Design Table support.



The CATIA administrator needs to set `CMI_USE_DTFORPRODUCT=ON` in the CATIA environment in order to enable the support of Design Tables and CATProducts.

Display Design Table



To display the Design Tables in the CATIA structure the relation setting shown in Figure 75 must be set.

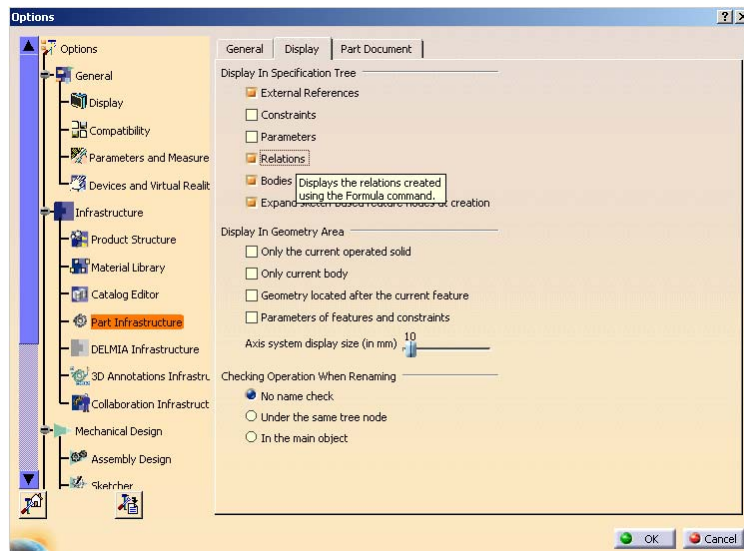



Figure 75: CATIA setting for displaying relations in the structure tree

Create Design Table



For this use case an Item was loaded from Teamcenter to CATIA. Then a Design Table was added to the CATPart with the CATIA Design Table command . Figure 76 shows the CATPart with the Design Table.

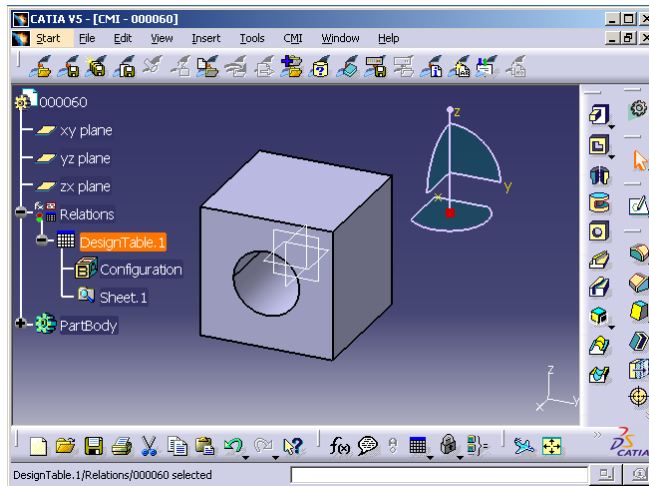


Figure 76: CATPart with Design Table



In CATIA use the CMI Synchronize command. The Dialog shown in Figure 77 will show that the newly created Design Table will be created in Teamcenter.

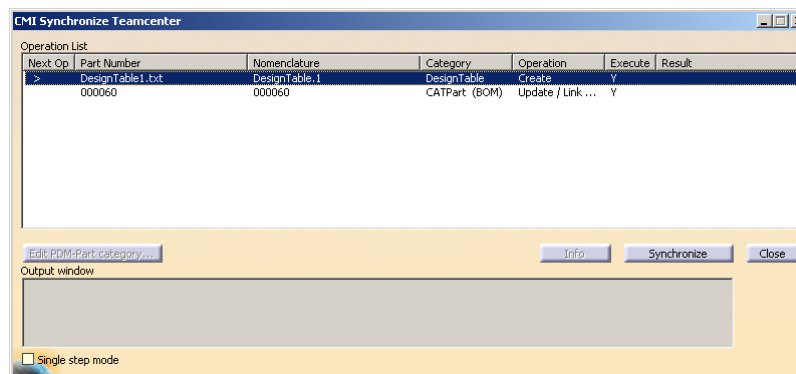


Figure 77: Synchronize dialog with create Design Table operation



The Design Table is created in Teamcenter and linked to the CATPart. Figure 78 shows the result from Teamcenter.

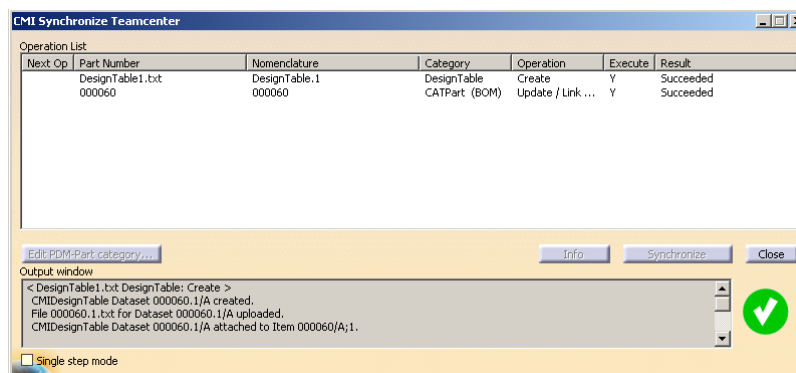


Figure 78: Synchronize dialog with creation result from Teamcenter



Figure 79 shows the result in Teamcenter. The Design Table dataset is created and added to the Item Revision.

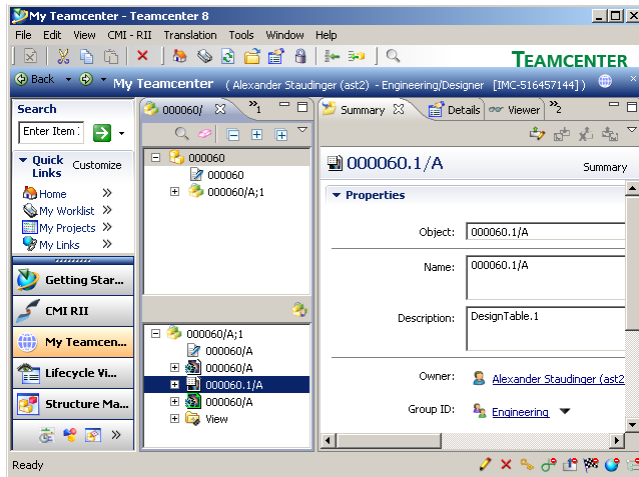


Figure 79: Design Table object in Teamcenter

Update Design Table



The Design Table can be changed in CATIA with a double click on the Design Table object. The dialog shown in Figure 80 will be opened.

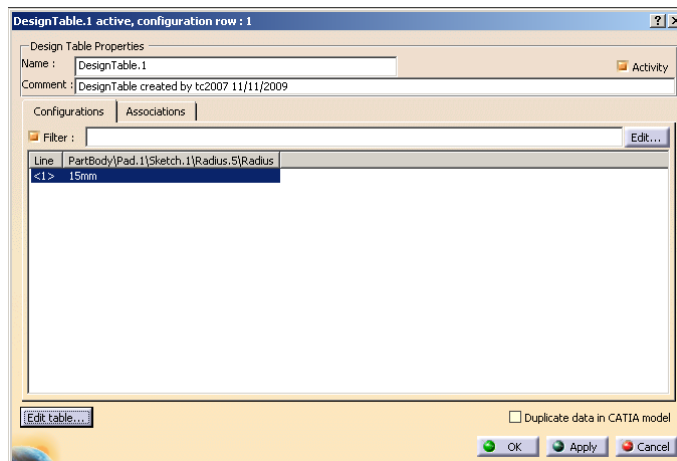


Figure 80: Edit Design Table dialog in CATIA



With the *Edit table ...* button an editor with the Design Table file is opened (see Figure 81). The radius is changed from 15 to 12.5 mm and the file is saved and the editor is closed.

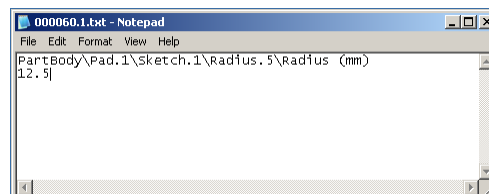


Figure 81: Opened Design Table file



CATIA will present the Knowledge Report (see Figure 82).

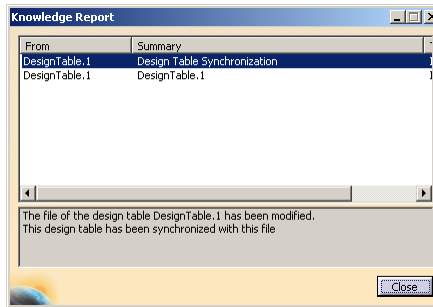


Figure 82: Knowledge Report in CATIA



The geometry of the hole is updated. Next the *Update Teamcenter* command is pressed in CATIA (see Figure 83).

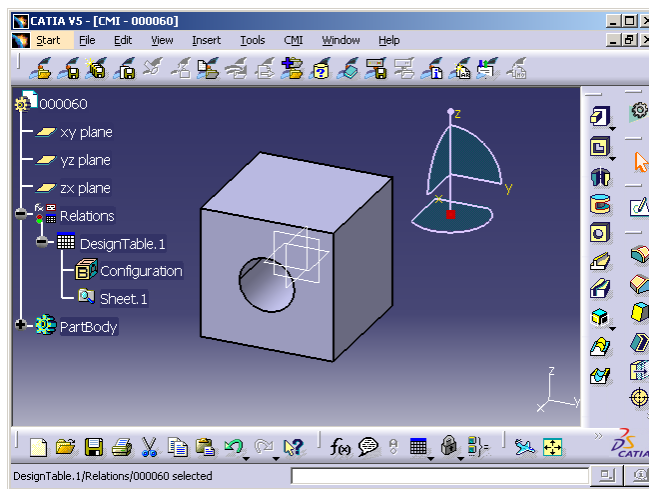


Figure 83: Changed Geometry in CATIA



CMI RII will update the changed CATPart and Design Table file to Teamcenter and will show the success dialog (see Figure 84).

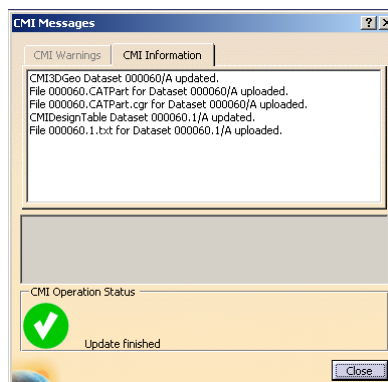


Figure 84: Success message from Teamcenter

Remove Design Table



The Design Table can be removed in CATIA. Figure 85 will show the CATPart without the Design Table.

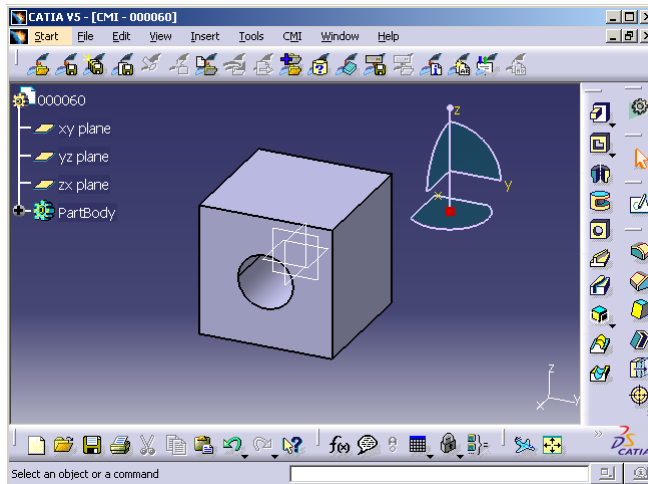


Figure 85: CATPart without Design Table



After pressing the Synchronize command the Synchronize dialog is shown. The selected line shows the operation “Update/Drop child”. With the *Info* command the information for the deleted children will be displayed.

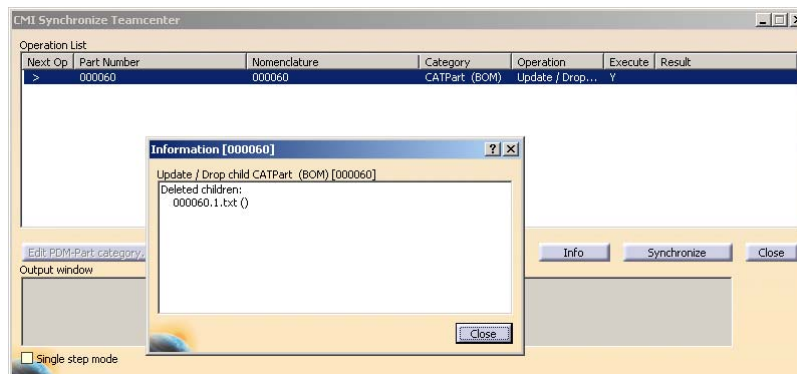


Figure 86: Synchronize dialog before Drop operation



The Synchronize command will remove the link from the CATPart (see Figure 87). The Design Table object is not removed from the item. The user has to check the status and if the Design Table dataset is not longer needed it can be removed in Teamcenter by the user.

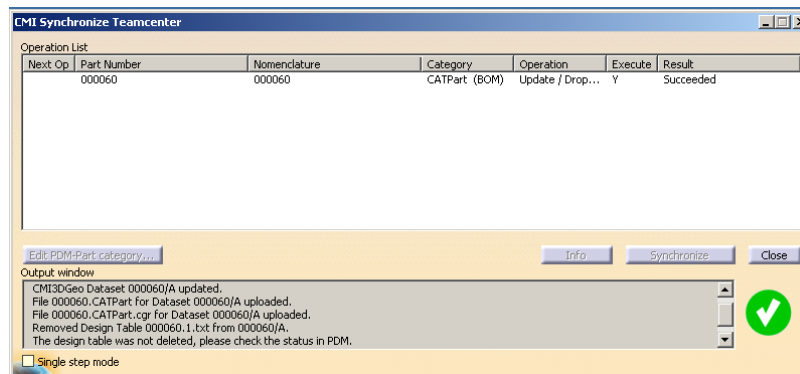


Figure 87: Success dialog from Teamcenter

Support of CATIA V5 Released Cache

CMI supports the use of cgr files in the *released cache* of CATIA V5. For this purpose the cgr files of CATIA models are stored in Teamcenter. During *To CATIA* these cgr files are copied to the released cache instead of the CATIA models to the exchange map. In CATIA V5 the cgr files are loaded in visualization mode.



Use *Edit*→*Options* to set the CMI RII preferences.

Set “Transfer CGR-File to CATIA V5” to “Only CGR” or “CGR + geometry”



Use *Tools*→*Options* to set the preferences in CATIA V5.

Set “Work with the Cache System” to “ON” and set the path to the released cache.

“Check timestamps” must be “ON”.

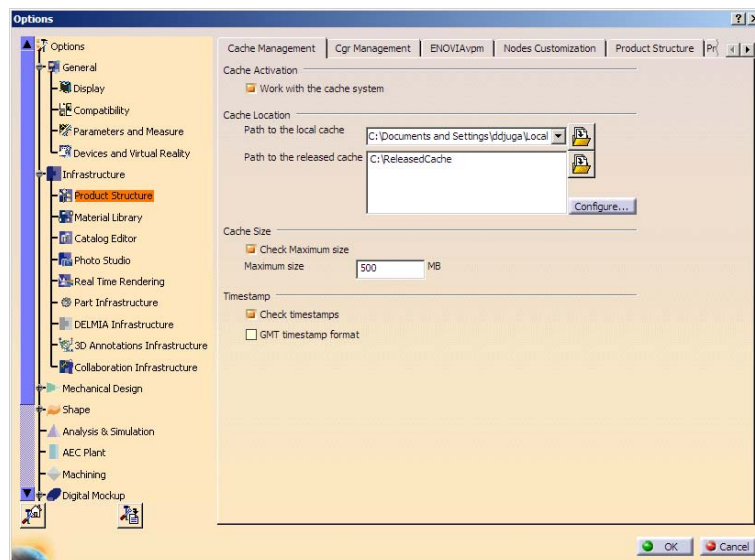


Figure 88: Tools→ Options dialog in CATIA



These are the necessary preconditions to copy a cgr file:

- Work with the cache system in CATIA V5 is enabled.
- The released cache is set and exists.
- The CATIA V5 configuration variable `CMI_USERRELEASEDCACHE` is set to “ON”.
- The CMI RII preference “Transfer CGR-File to CATIA V5” is set to “Only CGR” or “CGR + geometry”.
- A valid cgr file exists for the CATIA model in Teamcenter.



If the CATIA V5 configuration variable `CMI_SAVEADDITIONALCGR=ON` is set, CMI RII stores a cgr file in Teamcenter whenever a CATPart is created/updated.

Optional commands

In the following section, optional commands are described which must be enabled by the administrator.

Update Position



To enable this function the administrator has to set the CATIA V5 environment `CMI_ENABLE_CMIUPDATEPOSITIONCMD=ON`.
This function updates only the transformation matrices in Teamcenter. The CATProduct and CATPart files are not updated.

Update Parts



To get this function the administrator has to set the CATIA V5 environment `CMI_ENABLE_CMIUPDATEPARTCMD=ON`.
This function updates all modified CATPart files in Teamcenter. Transformations and CATProduct files are not updated.

Restore Positions



To enable this function the administrator has to set the CATIA V5 environment `CMI_RESTORE_POSITION=ON`.
This function restores the positions to their original state loaded from Teamcenter.

Choose Update Position



To get this function the administrator has to set the CATIA V5 environment `CMI_ENABLE_UPDATEPOSITIONDIALOG=ON`.
This function is available for normal *Update* and the *Update Position* command.

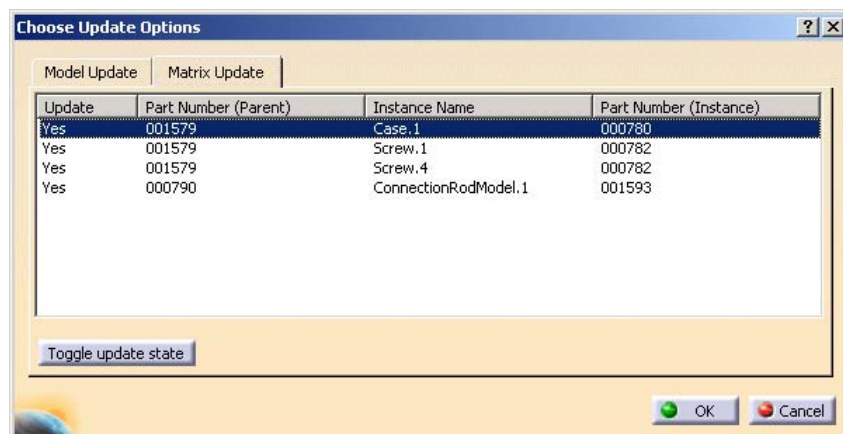


Figure 89: Choose Matrix To Update dialog



If you have changed some positions in the CATIA session this function allows you to select the matrices to be updated. If you select a line in the dialog the corresponding instance will be highlighted in the CATIA structure tree.

- Yes → Matrix will be updated in Teamcenter
- No → Matrix will stay unchanged in Teamcenter

To change the state you can double click a line or select the line and press the *Toggle update state* button.

Choose Update Geometry



To get this function the administrator has to set the CATIA V5 environment
CMI_ENABLE_UPD_MODELSELECT_DIALOG=ON.
This function is available for normal *Update* and the *Update Parts* command.

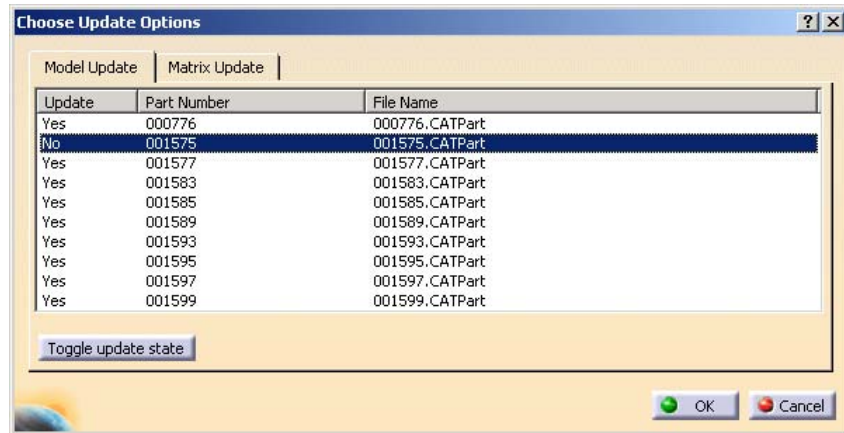


Figure 90: Choose Model To Update dialog



If you have changed some geometries in the CATIA session this function allows you to select the models to be updated.

- Yes → Model will be updated in Teamcenter
- No → Model will stay unchanged in Teamcenter

To change the state you can double click a line or select the line and press the *Toggle update state* button.

Check In/Check Out



To get this function the administrator has to set the CATIA V5 environment
CMI_ENABLE_CMICHECKINOUTCMD=ON.
This function is used to check in and check out datasets from the CATIA V5.

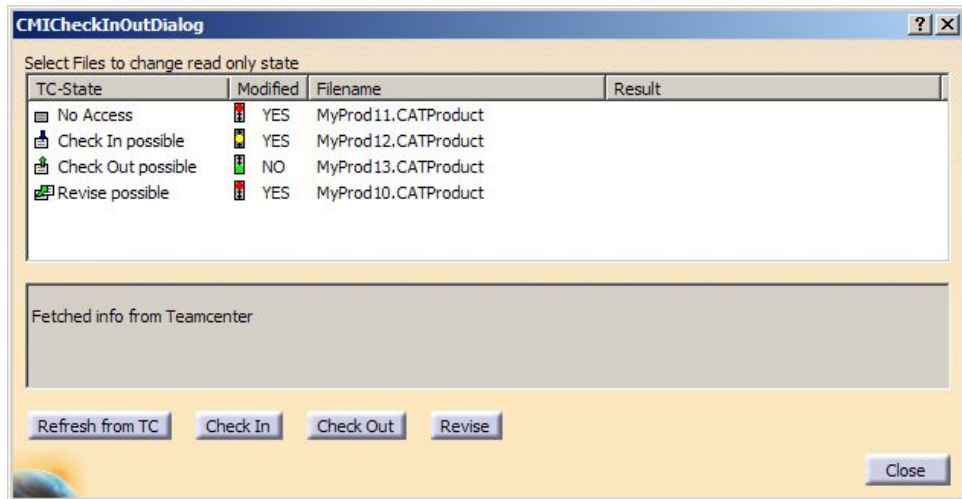


Figure 91: Check In/Check Out dialog

The dialog shows the following:

- **TC-State**
Shows the check in/check out, revise state of the dataset in Teamcenter.
- **Modified**
Shows the modification state in CATIA.
- **Filename**
Shows the filename.
- **Result**
Shows the result for the last action for the file.

The following actions are possible:

- **Refresh from TC**
Refresh the information from Teamcenter.
- **Check In/Check Out**
Before performing the *Check In/Check Out* action, the user has to select the files to be checked in/checked out.
- **Revise (see section Dataset pseudo Revise)**
Before performing the *Revise* action, the user has to select the files to be revised.

Dataset pseudo Revise

CMI RII supports the standard Teamcenter behavior for the revise process. That means when an Item Revision is going to be revised the CAD Datasets belonging to can be referenced by the new revision of the Item Revision ('Copy As Reference') or copied ('Copy As Object'). With "Copy As Reference" the Dataset is write protected.

In order to be able to modify the CAD Datasets in CATIA the CAD Dataset must be "pseudo Revised". Though, a revise is only possible under certain conditions:

- The CAD Dataset is referenced by a predecessor of the current Item Revision.
- The Item Revision B has "working" state and the user has write access to the Item Revision.
- If the CAD Dataset has "working" state a revise of the dataset is not required and will not be offered therefore.
- Only primary CAD Datasets can be revised: CMI3DGeo, CMIAux3DGeo, CMIStructure or CMI2DGeo.
- Only CAD Datasets that are attached to an Item/Part can be revised.

If these conditions are true then:

- Creation of a new CAD Dataset /B.
- Copy of the named Reference (the CATPart) from the CAD Dataset /A.
- Copy of attributes from CAD Dataset /A.
- Removal of Relationship between Item Revision /B and CAD Dataset /A.
- The CAD Dataset /B will be attached to Item Revision /B.
- Optionally (with CMI preference setting): Automatic Check Out of the new Dataset revision.

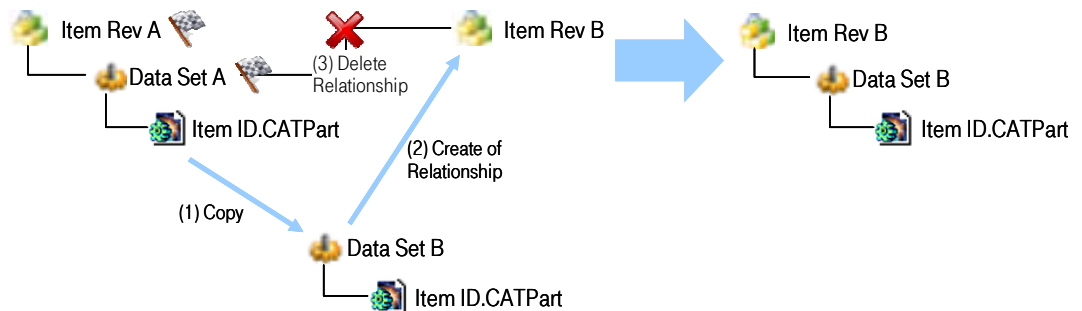


Figure 92: General Process of "Pseudo Revise" for CAD Datasets

Glossary

Administrator

Person, who configures the system, inserts users, manages user permissions and maintains the database.

Browser

Window that displays *icons* representing *objects*.

Check In

Action that takes from the users the right to update a work item.

Check Out

Action that gives the user the exclusive right to update a work item. Checking out an item creates a copy of the work item in the specified work location.

Configuration Context

An attribute that determines which Item Revision should be displayed (for example, only the last revisions).

Dialog Window

Window in which the user enters information.

Field

Component of a *dialog window* in which the user can enter text.

Generic Workbench

Set of components such as windows, dynamic items and information items, used in *Teamcenter* integration products.

Icon

Graphical representation of an *object*.

List View

Style of *browser* window in which *objects* are viewed as small *icons* in a list with attribute values in columns.

Object

An item or relationship.

Palette

Any group of CATIA functions created for specific requirements.

Plot File

File in a specified format that can be plotted or opened in a viewing tool and represents a 2D view of a model.

Pop-Up Menu

The menu that appears when the user points an *icon* and holds the right mouse button pressed.

Query

To search the database for *objects* that match specific criteria.

Register

To make a file or directory known as an *object* maintained in the Teamcenter database.

Tree View

Style of *browser* window in which *objects* are displayed as relationships in horizontal branches.

Vault

Secure place for storing information. To access the data confined in a vault it is necessary to *check out* or revise the data.