

# **CATIA Teamcenter Interface**

**CMI Release 9.4**

---

**Release Notes**

---

## Copyright

© 2000, 2008 T-Systems Enterprise Services GmbH.  
All rights reserved. Printed in Germany.

---

## Contact

T-Systems Enterprise Services GmbH  
Solution Center PLM  
Fasanenweg 5  
70771 Leinfelden-Echterdingen  
Germany

<http://www.cmi-support.com>

☎ +49 (0711) 972 - 49 758

✉ +49 (0711) 972 - 90 330

mail: [cmi\\_support@t-systems.com](mailto:cmi_support@t-systems.com)

---

## Manual History

Version	Date
9.4	March 2008

This edition obsoletes all previous editions.

---

## Trademarks

CATIA is a registered trademark of Dassault Systèmes.  
Metaphase is a registered trademark of Metaphase Technology, Inc.  
Teamcenter Enterprise is a registered trademark of Siemens PLM Corporation.  
Names of other products mentioned in this manual are used only for identification purpose and may be trademarks of their companies.

---

# Preface

---

## About this Guide

This guide provides general release information for the CATIA Teamcenter Interface.

---

## Related Documents

The following manuals contain information about installation and administration of the CATIA Teamcenter Interface:

Manual Title	Release
<i>CATIA Teamcenter Interface Installation &amp; Administration Guide</i>	9.4
<i>CATIA Teamcenter Customizing Guide</i>	9.4
<i>CATIA Teamcenter User's Guide</i>	9.4

---

## Your Comments are Welcome

Your comments on our publications are welcome. Please write us at:

T-Systems Enterprise Services GmbH  
Solution Center PLM  
Fasanenweg 5  
70771 Leinfelden-Echterdingen  
Germany

mail: [cmi\\_support@t-systems.com](mailto:cmi_support@t-systems.com)



---

# Table of Contents

---

<b>CHAPTER 1</b> .....	<b>1</b>
SUPPORTED PLATFORMS.....	1
SUPPORTED TEAMCENTER RELEASES .....	1
SUPPORTED CATIA V4 RELEASES .....	1
SUPPORTED CATIA V5 RELEASES .....	1
<b>CHAPTER 2</b> .....	<b>3</b>
USER SPECIFIC DMU FILE.....	3
DISPLAY CATIA NODE NAME IN SYNCHRONIZE.....	3
RESTRUCTURED SYNCHRONIZE.....	4
PERFORMANCE IMPROVEMENT FOR LARGE PRODUCT STRUCTURE IN CATIA V5 .....	4
INTEROPERATION WITH VISMOCKUP .....	4
<b>CHAPTER 3</b> .....	<b>7</b>
CATIA V5.....	7
TEAMCENTER ENTERPRISE .....	7
<b>CHAPTER 4</b> .....	<b>9</b>
<b>CHAPTER 5</b> .....	<b>11</b>
<b>CHAPTER 6</b> .....	<b>13</b>

---



---

# CHAPTER 1

## Platform Support

---

### Supported platforms

HP-UX 11  
Sun Solaris 8 (10<sup>1</sup>)  
IBM AIX 5.1 32 bit / 64 bit  
SGI Irix 6.5  
Windows XP 32 bit / 64 bit

---

### Supported Teamcenter Releases

Teamcenter 5.0  
Teamcenter 5.1  
Teamcenter 2007<sup>1</sup>

---

### Supported Catia V4 Releases

CATIA V4.2.0 – V4.2.4  
CATIA V4.2.5<sup>1</sup>

---

### Supported Catia V5 Releases

CATIA V5R16  
CATIA V5R17  
CATIA V5R18<sup>1</sup>  
CATIA V5R19<sup>1</sup>

---

<sup>1</sup> Solaris 10 replaces Solaris 8



---

# CHAPTER 2

## Functional Changes

---

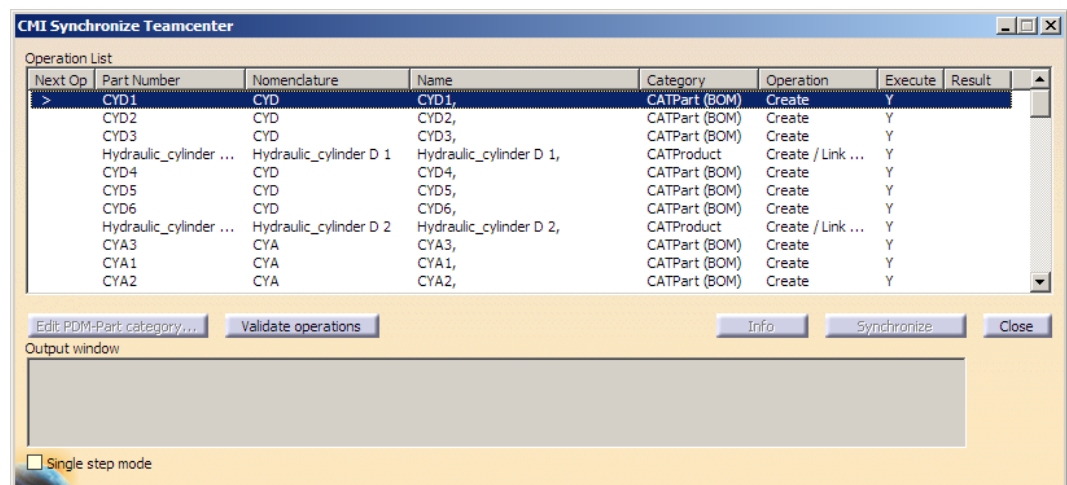
### User specific DMU file

The DMU file for the neighbourhood search can be created in the user's work location instead of a central vault, so the users can have independent configurations.

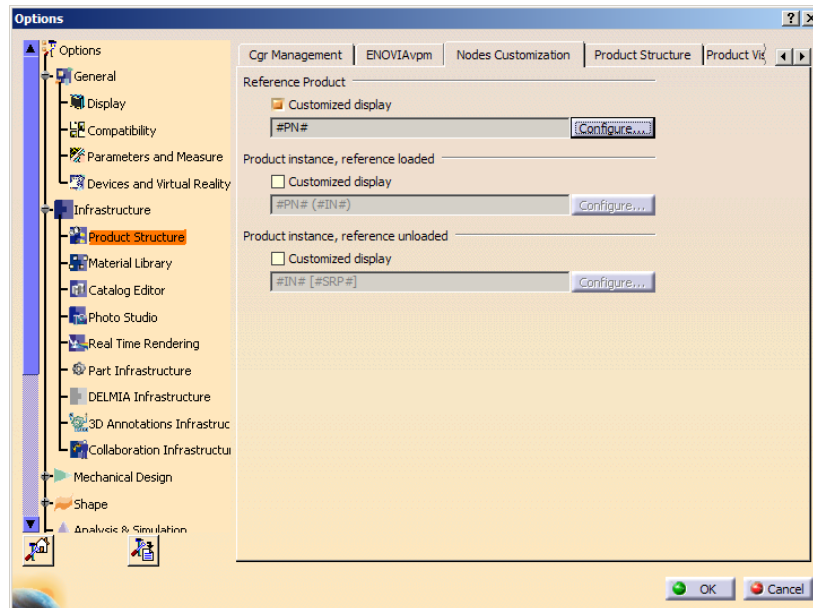
Set CMI\_DMU\_USE\_WORKLOC "ON" in your Teamcenter configuration. The DMU file will be created in the users' Product Worklocation.

---

### Display CATIA Node Name in Synchronize



The Column **Name** holds the text configured in the customized display for Reference Product:



To make the Name Column visible by default, the following setting has to be changed in the file CMIUpdateCreateDialog.CATRsc :

```
// Column width of Name
JobMultiList.ColumnWidth4 = "0";
```

To hide Nomenclature and show Name instead you have to set:

```
// Column width of Nomenclature
JobMultiList.ColumnWidth3 = "0";
// Column width of Name
JobMultiList.ColumnWidth4 = "16";
```

## Restructured Synchronize

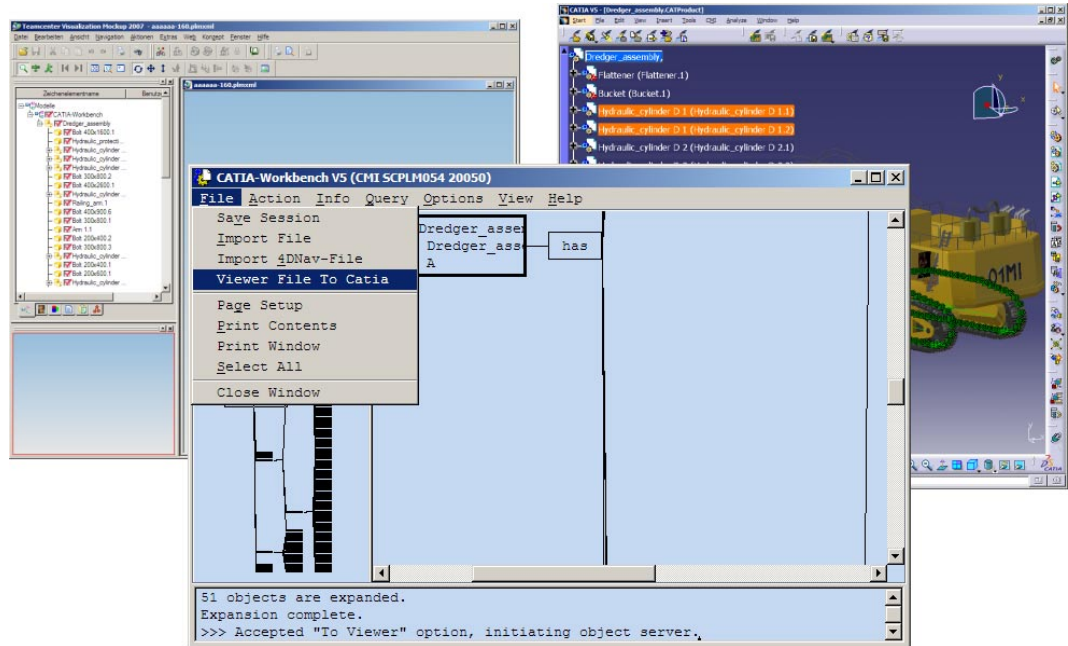
Operations for CATParts in the Synchronize Teamcenter Dialog will appear directly before the CATProduct where they are used.

## Performance improvement for large product structure in CATIA V5

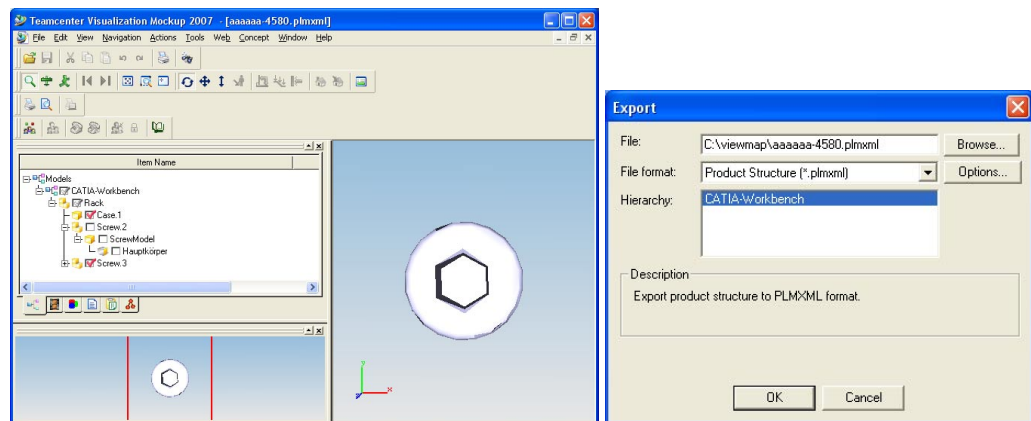
The handling of very large product structures in CATIA V5 has been optimized for better performance.

## Interoperation with VisMockup

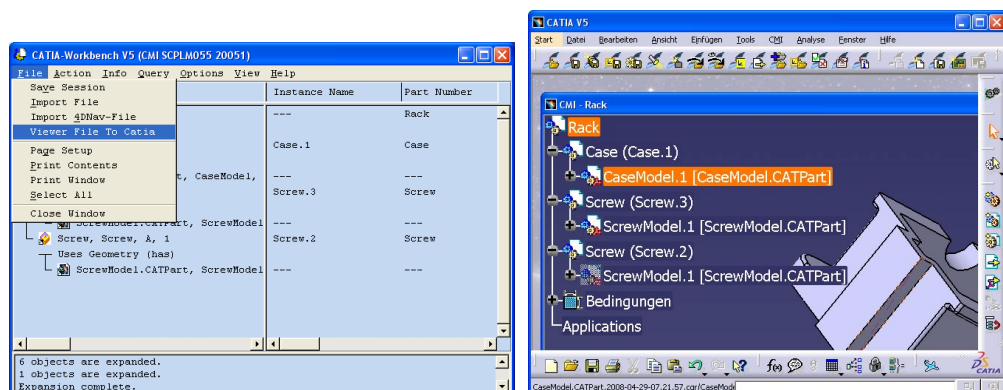
There is now a two-way interoperation with VisMockup. An assembly that was opened into VisMockup from the CMI Workbench with the "To Viewer" functionality can be imported back into CATIA V4/V5 based on configurations or selections made in VisMockup.



In order to send the configured product structure from VisMockup to Catia (V5 or V4), you need to export it from VisMockup as plmxml.



In the Workbench click *File->Viewer File To Catia* to have CMI mark-up the product structure and automatically send it to Catia via the *Marked Items To Catia* functionality. Only those geometries that were visible in VisMockup will be opened in Catia.





---

# CHAPTER 3

## New Environment Variables

---

### CATIA V5

#### CMI\_DELETE\_STALE\_DESIGNTABLES

If set to "ON" design tables in CMIXMAP that are no longer referenced by a CATPart/CATProduct are deleted.

This ensures that design tables that were not explicitly provided by the PDM system are not used involuntarily by Catia.

#### Obsolete: CMI\_USELICMAN12

This setting is obsolete. CMI 9.4 no longer supports Licman 1.2. Licman 2.0 is now the mandatory license manager.

---

### Teamcenter Enterprise

#### CMI\_DMU\_USE\_WORKLOC

Set to "ON" to create the DMU\_File in the product worklocation of the current user.

DMU File for the neighborhood search is meant to be created by a centralized in a vault location. With this option it will be created in the current user's worklocation instead, so that it is user specific.

#### Changed: CMI\_USE\_CCS

In order to use the CCS service, CMI\_USE\_CCS needs to be explicitly set to "True" for a client workstation. Previously, CCS was used by default if CCS was present in the datamodel of the installation, unless it was explicitly set to "False".

The CCS is an optional service included in your CMI installation that can improve the performance for enterprises with distributed file data. To find out more about CCS see the *CMI Installation Manual: Optimization of Teamcenter Performance*.



---

# CHAPTER 4

## **New Customization Points**

n/a



---

# CHAPTER 5

## Data Model Changes

n/a



---

# CHAPTER 6

## Bug Fixes

If you encounter any problems please contact us at [cmi\\_support@t-systems.com](mailto:cmi_support@t-systems.com)