

**CMI Release 9.2**

---

**Release Notes**

---

## Copyright

© 2000, 2007 T-Systems International GmbH.  
All rights reserved. Printed in Germany.

---

## Contact

T-Systems International GmbH  
Solution Center PLM  
Fasanenweg 5  
70771 Leinfelden-Echterdingen Germany

<http://www.cmi-support.com>

☎ +49 (0711) 972 - 49 758

✉ +49 (0711) 972 - 90 330

mail: [cmi\\_support@t-systems.com](mailto:cmi_support@t-systems.com)

---

## Manual History

Version	Date
9.2	Oktober 2007

This edition obsoletes all previous editions.

---

## Trademarks

CATIA is a registered trademark of Dassault Systèmes.  
Metaphase is a registered trademark of Metaphase Technology, Inc.  
Teamcenter Enterprise is a registered trademark of UGS Corporation  
Names of other products mentioned in this manual are used only for identification purpose and may be trademarks of their companies.

---

# Preface

---

## About this Guide

This guide provides general release information for the CATIA Teamcenter Interface.

---

## Related Documents

The following manuals contain information about installation and administration of the CATIA Teamcenter Interface:

Manual Title	Release
<i>CATIA Teamcenter Interface Installation &amp; Administration Guide</i>	9.2
<i>CATIA Teamcenter Customizing Guide</i>	9.2
<i>CATIA Teamcenter User's Guide</i>	9.2

---

## Your Comments are Welcome

Your comments on our publications are welcome. Please write us at:

T-Systems International GmbH  
Solution Center PLM  
Fasanenweg 5  
70771 Leinfelden-Echterdingen

mail: [cmi\\_support@t-systems.com](mailto:cmi_support@t-systems.com)



---

# Table of Contents

---

<b>CHAPTER 1</b> .....	<b>1</b>
<b>PLATFORM SUPPORT</b> .....	<b>1</b>
SUPPORTED PLATFORMS.....	1
SUPPORTED TEAMCENTER RELEASES .....	1
SUPPORTED CATIA V4 RELEASES .....	1
SUPPORTED CATIA V5 RELEASES .....	1
<b>CHAPTER 2</b> .....	<b>3</b>
<b>NEW FUNCTIONALITY</b> .....	<b>3</b>
CREATE OPTION FOR CATPART / CATDRAWING INSIDE TEAMCENTER .....	3
LOCAL SAVE AND RESTORE.....	4
READ INERTIA DATA FROM CATIA .....	5
<b>CHAPTER 3</b> .....	<b>7</b>
<b>CHANGED / IMPROVED FUNCTIONALITY</b> .....	<b>7</b>
IMPROVED CMI CACHE CONTENT MANAGEMENT.....	7
SPLIT CATIA V5 TOOLBARS .....	7
OOTB SUPPORT FOR VIEW NETWORKS.....	8
ENHANCED CMI INFO .....	8
<b>CHAPTER 4</b> .....	<b>9</b>
<b>NEW ENVIRONMENT VARIABLES</b> .....	<b>9</b>
TEAMCENTER CONFIGURATION: .....	9
CATIA ENVIRONMENT:.....	9
<b>CHAPTER 5</b> .....	<b>10</b>
<b>NEW CUSTOMIZATION POINTS</b> .....	<b>10</b>
<b>CHAPTER 6</b> .....	<b>11</b>
<b>DATA MODEL CHANGES</b> .....	<b>11</b>
NEW CLASSES .....	11
CHANGES.....	11
CLASS CONSTANTS .....	11
<b>CHAPTER 7</b> .....	<b>12</b>
<b>BUG FIXES</b> .....	<b>12</b>

---



---

# CHAPTER 1

## Platform Support

---

### Supported platforms

HP-UX 11  
Sun Solaris 8 (TC 2007 : Solaris 10)  
IBM AIX 5.1 32 bit / 64 bit  
SGI Irix 6.5  
Windows XP 32 bit / 64 bit

---

### Supported Teamcenter Releases

Teamcenter 5.0  
Teamcenter 5.1  
Teamcenter 2007

---

### Supported Catia V4 Releases

CATIA V4.2.0 – V4.2.4

---

### Supported Catia V5 Releases

CATIA V5R16  
CATIA V5R17  
(CATIA V5R18)



---

# CHAPTER 2

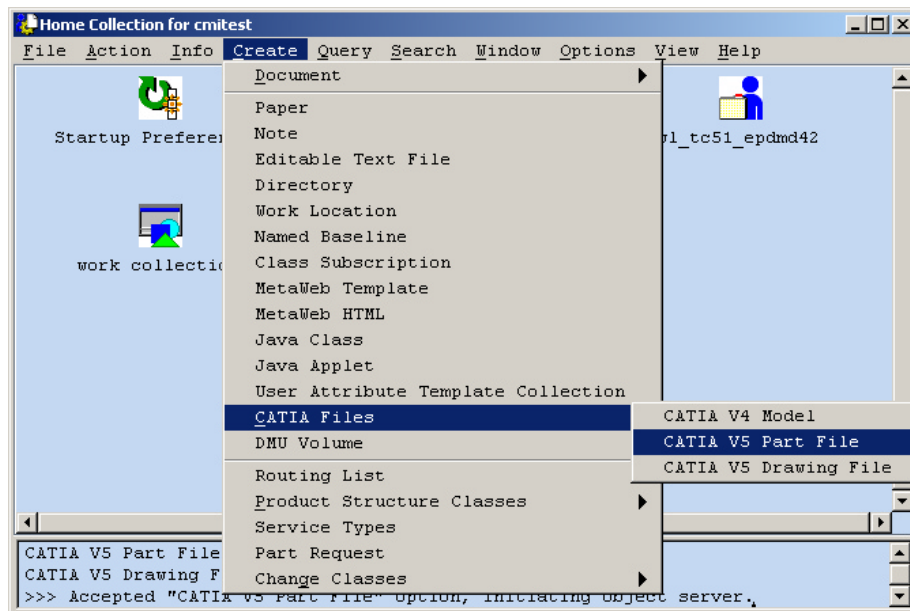
## New Functionality

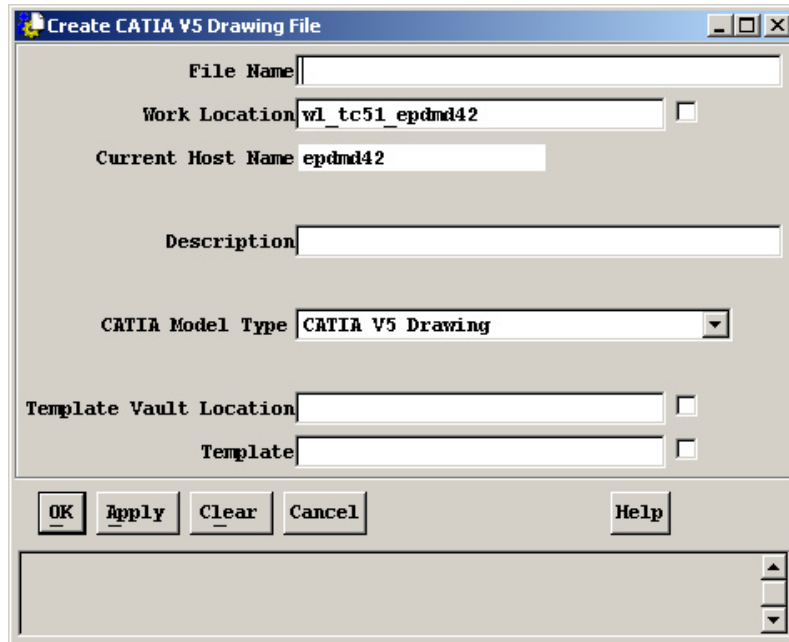
---

### Create option for CATPart/CATDrawing inside Teamcenter

CATPart and CATDrawing can now be created from inside Teamcenter, based on templates.

Within the Teamcenter Create menu there is a dedicated submenu for CATIA Files, that also has items for CATPart and CATDrawing.





In order to create a CATPart or CATDrawing, you need an existing file as a template. Templates can be chosen from a configured Template Vault. The template vaults are configured in the TC configuration file set CMI\_TEMPLATE\_VAULTLOCS "{xxx\_VL} {yyy\_VL}"; If the CMI\_TEMPLATE\_VAULTLOCS-variable is not defined, the Create is refused.

If you click the chooser of the Template attribute, all file names of the selected vaultlocation are presented which correspond to the file type to create (CATPart/CATDrawing).

The existing "Create CATIA V4 Model" that is based on a template class for V4 models remains unchanged.

## Local Save and Restore



In Catia V5, the contents of the session can be stored locally.

This session will persist even when Catia V5 is closed.

The session contents are stored in the exchangemap as a single proprietary file.



When the session is restored, the user can continue his work as if the data was retrieved from the PDM system with *Read from Teamcenter*, ie. he can perform Updates. The restore session command is only available when the Catia is empty – ie. no documents are loaded – to avoid conflicts.

The functionality is to avoid time consuming Read operations, for instance for WAN users who work in the same context for an extended period of time.

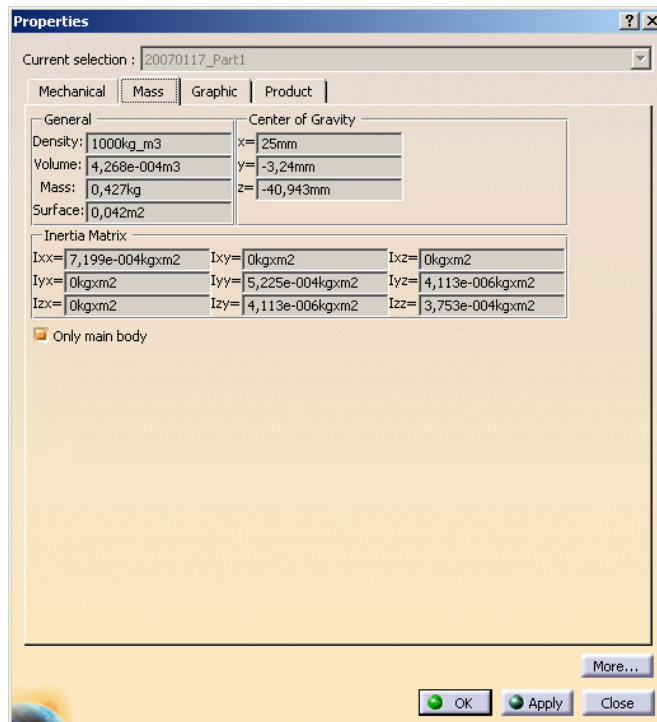
We do not want to encourage users to bypass the corporate PDM system, so there are a few purposeful restrictions:

- Only one saved session is maintained at a time.

- The session can only be saved when the data is up to date. I.e. there are no files in a modified state, and no new files.
- The save/restore session does not restore files that were not loaded from the PDM system.
- A user does not have direct access to the contents of the saved session, other than through restore.

## Read Inertia data from Catia

Inertia properties – eg. Mass – can now be read from Catia and stored in Teamcenter.



In order to read these properties from Catia, the following Catia V5 environment variable has to be set:

```
set CMI_READ_INERTIA=ON
```

The properties can be used in Teamcenter by overriding the customizing method `g0GenBin:x3SetCusAttrModInf` for the CATProduct and/or the CATPart. The customizing method is called in the course of Update, Create and similar actions. The following named values are provided to the API:

```
mass
INERTIA_MASS
```

```
position of the center of gravity
INERTIA_POSITION_0
INERTIA_POSITION_1
INERTIA_POSITION_2
```

```
inertia matrix
INERTIA_MATRIX_0
INERTIA_MATRIX_1
INERTIA_MATRIX_2
INERTIA_MATRIX_3
```

INERTIA\_MATRIX\_4  
INERTIA\_MATRIX\_5  
INERTIA\_MATRIX\_6  
INERTIA\_MATRIX\_7  
INERTIA\_MATRIX\_8

components of principal axes

INERTIA\_COMPONENTS\_0  
INERTIA\_COMPONENTS\_1  
INERTIA\_COMPONENTS\_2

INERTIA\_COMPONENTS\_3  
INERTIA\_COMPONENTS\_4  
INERTIA\_COMPONENTS\_5  
INERTIA\_COMPONENTS\_6  
INERTIA\_COMPONENTS\_7  
INERTIA\_COMPONENTS\_8

principal moments values

{INERTIA\_VALUES\_0} 1.0341075818066402e-004  
{INERTIA\_VALUES\_1} 1.0341075818066402e-004  
{INERTIA\_VALUES\_2} 1.9634954084936208e-004

{INERTIA\_VOLUME} 1.5707963267948968e-004  
{INERTIA\_DENSITY} 1.0000000000000000e+003  
{INERTIA\_AREA} 2.1991148575128551e-002

---

# CHAPTER 3

## Changed / Improved Functionality

---

### Improved CMI cache content management

Since version 8.8 CMI provides a caching mechanism to avoid the transfer of already known files to the CMI exchange map and the CMI released cache directory. This mechanism works not only during a single CATIA V5 session, but also after restarting CATIA V5.

This mechanism caused a dilemma: If you wanted to use the advantage of the caching mechanism over multiple sessions the size of the CMI exchange map and the CMI released cache directory could increase to unacceptable size. If you had cleaned the CMI exchange map and the CMI released cache directory between the CATIA V5 sessions, you were not able to take advantage of the cross-session caching.

To solve this dilemma CMI now provides the possibility to keep the size of the cached files in the CMI exchange map and the CMI released cache directory within specified limits. CMI also provides the possibility to remove stale files which are not used for cross-session caching. The cleanup of the CMI exchange map and the CMI released cache directory will be done during closing CATIA V5.

```
# Enable cleanup of unknown files from CMIXMAP
set CMI_REMOVE_UNKNOWN_FILES_IN_XMAP=ON

# Size in MB of cached files in CMIXMAP after closing CATIA
set CMI_XMAP_CACHE_SIZE=4096

# Size in MB of cached cgr files in CMI_RELEASEDCACHEDIR
set CMI_RELMAP_CACHE_SIZE=1024
```

The following variables must not be set:

```
CMI_CLEANRELEASEDCACHE
CMI_DISABLE_XMAPCACHE
```

---

### Split Catia V5 toolbars

The CMI Toolbar in Catia V5 has been split into three thematic toolbars. The *CMI Toolbar* retains commonly used commands, like Read and Update. A new toolbar *CMI Geometry Tools* contains commands pertaining to a single geometry, like Create, SaveAs. A third toolbar *CMI Advanced Tools* has special or rarely used commands.

To fall back to the classic single toolbar, set `CMI_USE_91_TOOLBAR=ON` in the Catia environment.



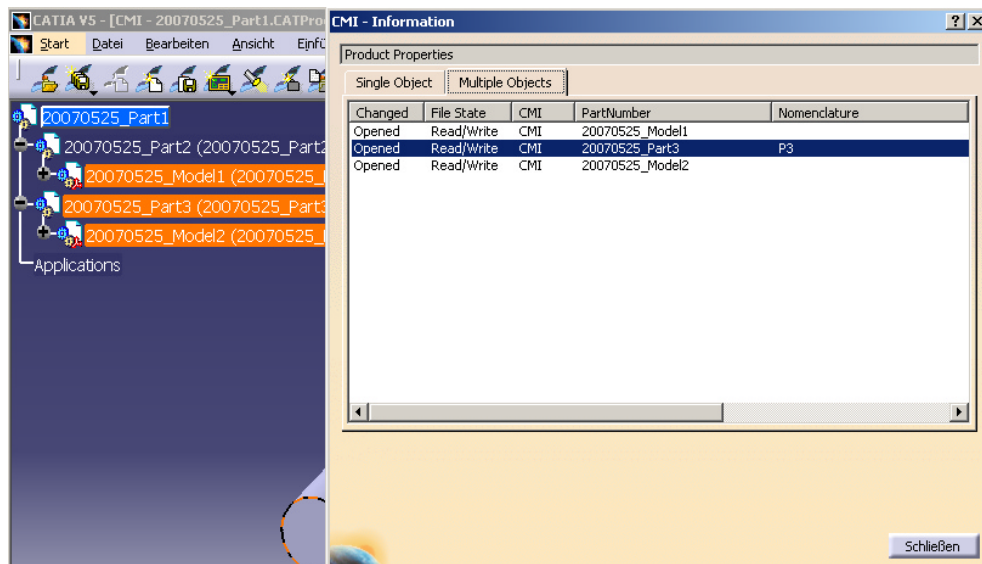
## OOTB support for View Networks

Use of View Networks in the context of CMI previously required customizing, and had a performance impact on Read as well as on Update functions. In CMI 9.2 OOTB support for View Networks can be enabled by setting the following variable in the Teamcenter configuration:

```
set CMI_VIEW_NETWORK_EXPAND="ON";
```

The setting allows use of View Network without a performance impact on Read. However it still has a considerable performance impact on updates. Hence it is recommended to rather not use View Networks in the design context.

## Enhanced CMI Info



The CMI Info dialog can show information for multiple selected items in an overview table.

---

# CHAPTER 4

## New Environment Variables

### Teamcenter configuration:

```
set CMI_TEMPLATE_VAULTLOCS "{xxx_VL} {yyy_VL}";
```

List of vault locations where template files for the Create->CATPart and Create->CATDrawing features are provided.

```
set CMI_VIEW_NETWORK_EXPAND "ON";
```

Set to "ON" if you require to use View Networks in the context of CAD Design. This has a performance impact during update.

### Catia Environment:

```
CMI_DISABLE_CMISAVELOCALCMD
```

If set To "ON" the CMI SaveLocal Command is disabled

```
CMI_DISABLE_CMIRESTORELOCALCMD
```

If set To "ON" the CMI RestoreLocal Command is disabled

```
CMI_LOCAL_SESSIONFILE_PATH
```

(optional) The Full path which will point to an session file. Write access must exist for file and folder. Default is `$CMIXMAP/session.cmisession`

```
set CMI_REMOVE_UNKNOWN_FILES_IN_XMAP=ON
```

Enable cleanup of unknown files from CMIXMAP

```
set CMI_XMAP_CACHE_SIZE=4096
```

Size in MB of cached files in CMIXMAP after closing CATIA

```
set CMI_RELMAP_CACHE_SIZE=1024
```

Size in MB of cached cgr files in CMI\_RELEASEDCACHEDIR

```
set CMI_USE_91_TOOLBAR=ON
```

If set to "ON" the 9.1 toolbar style (only one toolbar) is used

# CHAPTER 5

## New Customization Points

```
object message Part:x3GetRelevRelViaExpand(  
  input :      ObjectPtr      partObj      ::  
  input :      string         relObjid     ::  
  output:      ObjectPtr      *relObj      ::  
  output:      integer        *mfail) code
```

This new message is used to locate a Relation in Teamcenter during an Update from Catia, if the OOTB view networks support is enabled. It is to return a Relation by its OBID. In the presence of View Networks, only a Relation object that was the result of an expand is valid.

---

# CHAPTER 6

## Data Model Changes

---

**New Classes**

---

**Changes**

---

**Class Constants**

# CHAPTER 7

## Bug Fixes

Please contact [cmi\\_support@t-systems.com](mailto:cmi_support@t-systems.com)